

世界电梯领域的杰出专家

CANNY ELEVATOR—
An Expert in the Worldwide elevator Industry.

KONL® 康力电梯股份有限公司
CANNY ELEVATOR CO.,LTD.

◎地址: 中国·江苏吴江(芦墟)临沪经济开发区88号 ◎邮编: 215213
◎电话: 0512-63290000 ◎传真: 0512-63293938 ◎网址: www.canny-elevator.com
◎电子邮箱: (国内) js-konl@163.com marketing@canny-elevator.com
(国外) export-canny@163.com export@canny-elevator.com
◎Add: No.88, (Luxu) Linhu Economic Development Zone, Wujiang City, Jiangsu Province, China
◎Tel: +86-512-63290000 63297851 ◎Fax: +86-512-63299709 ◎P.C:215213
◎URL: www.canny-elevator.com ◎E-mail: export-canny@163.com Export@canny-elevator.com

哈尔滨

地址/Add: 黑龙江省哈尔滨市南岗区西大直街400号和兴商厦丽云阁1-1503号
电话/Tel: 0451-86332670
传真/Fax: 0451-86339071
邮编/P.C: 150080

山东

地址/Add: 山东省济南市山大路228号齐鲁软件大厦A座496室
电话/Tel: 0531-82357211
传真/Fax: 0531-82357218
邮编/P.C: 250014

江西

地址/Add: 南昌市北京西路88号江信国际大厦1416室
电话/Tel: 0791-6304766
传真/Fax: 0791-6304776
邮编/P.C: 330006

湖南

地址/Add: 湖南省长沙市芙蓉中路二段91号东成大厦2506
电话/Tel: 0731-2806806
传真/Fax: 0731-2806906
邮编/P.C: 410011

四川

地址/Add: 成都市青羊区四威南路1号
电话/Tel: 028-81708530
传真/Fax: 028-81708530
邮编/P.C: 610091

辽宁

地址/Add: 沈阳市沈河区大西路一号金星大厦4B02
电话/Tel: 024-31298106
传真/Fax: 024-31298105
邮编/P.C: 110012

上海

地址/Add: (200052) 上海市番禺路390号时代大厦16楼B座
电话/Tel: 021-62828058
传真/Fax: 021-62828360
邮编/P.C: 200052

福州

地址/Add: 福州市东大路8号花开富贵B座8E
电话/Tel: 0591-87617848
传真/Fax: 0591-87512986
邮编/P.C: 350001

广西

地址/Add: 广西南宁市地洞路口12号6层
电话/Tel: 0771-3905422/3126486
传真/Fax: 0771-3126486
邮编/P.C: 530003

重庆

地址/Add: 重庆市江北区观音桥步行街9号嘉年华大厦10-4室
电话/Tel: 023-67877017
传真/Fax: 023-67877025
邮编/P.C: 400020

北京

地址/Add: 北京市宣武区马莲道11号一商大厦1023室
电话/Tel: 010-63342106
传真/Fax: 010-63342109
邮编/P.C: 100055

南京

地址/Add: 南京市中华路302号西华大厦10F
电话/Tel: 025-52201875
传真/Fax: 025-52200265
邮编/P.C: 210006

郑州

地址/Add: 郑州市郑东新区CBD商务内环道11号楼1606室
电话/Tel: 0371-68080399
传真/Fax: 0371-68080023
邮编/P.C: 450008

深圳

地址/Add: 深圳福田保税区红棉路英达利科技数码园B栋304单元
电话/Tel: 0755-82838588
传真/Fax: 0755-82838508
邮编/P.C: 518038

西安

地址/Add: 陕西省西安市小寨东路196号西安国际贸易中心2101室
电话/Tel: 029-85381320
传真/Fax: 029-85381320
邮编/P.C: 710061

天津

地址/Add: 天津市南开区鞍山西道338号广汇大厦1601室
电话/Tel: 022-58392262
传真/Fax: 022-58392263
邮编/P.C: 300193

苏州

地址/Add: 苏州三香路阊胥路口华李大厦1604室
电话/Tel: 0512-65091278
传真/Fax: 0512-65091205
邮编/P.C: 215000

湖北

地址/Add: 湖北省武汉市江汉区新华路186号福星国际商务大厦1011室
电话/Tel: 027-59318723
传真/Fax: 027-59318722
邮编/P.C: 430022

广州

地址/Add: 广州市天河区天府路237号华建大厦C座1708室
电话/Tel: 020-85623465
传真/Fax: 020-85623468
邮编/P.C: 510630



KLK1 乘客电梯
KLK1 Passenger Elevator

KLK2 高速电梯
KLK2 High Speed Elevator

KLW 无机房电梯
KLW Machine Roomless Elevator

不止电梯 还有梦想

Elevators and Dreams

2008奥运中国，
更快、更高、更强的奥运精神，更是康力人的精神

2008 Olympic Games in China,
Faster, Higher, stronger, is not only Olympic motto, but
also CANNY's pursuit.

作为国内电梯业的行业领袖，康力电梯股份有限公司激流勇进，充满活力，是一个致力于发扬拼搏精神与民族事业的团队，敢于在振兴民族工业的舞台上嘹亮放歌！

As a leading figure in the domestic lift industry, CANNY Elevator Co., Ltd. is full of vigor to brave the waves and advance forward. It is a group that is engaged in advocating the struggling spirits and the national career. It dares to

康力电梯股份有限公司

中国驰名商标、国家火炬计划重点高新技术企业、欧洲CE认证

连续三年电梯行业内资企业主要经济指标位居第一

CANNY ELEVATOR CO., LTD.

China Famous Brand, Key HI-New Tech company in National Torch Plan CE Certificate
First comprehensive economic strength among domestic elevator companies, for 3 years.



在康力电梯股份有限公司
每年，都有一部分资金作为对中国体育事业的支持。
CANNY Sponsor Sports Every Year

瑰丽品质

绚丽之作

Rosy quality

Splendid masterpiece

康力KLK1系列乘客电梯，充分满足现代住宅楼宇垂直交通运输的需要，采用康力成熟的制造工艺结合最先进的控制技术，精心设计开发而成。其无论在运行品质、安全功能、装潢设计、节能降耗等方面均有最上乘的表现，产品总体张扬着电梯的刚性之美、和谐之美、时尚之美。

康力KLK1系列乘客电梯，既能满足房地产商经济实用的购买需求，又能切合乘客对安全可靠、舒适快捷、经济耐用的心理预期，适合中高层建筑的需求。绚丽之作，是您最理想的选择。

CANNY KLK1 serial passenger lift fully satisfies the vertical transport requirements from the modern residential buildings. It adopts CANNY' s mature manufacture craft and technology with the combination of the most advanced control techniques for the elaborate design and development. It always has the superior displays in the aspects such as the travel quality, safety functions, decoration design, energy-saving and loss reduction etc. The products comprehensively advocate the lift beauty of the rigidity, harmony and fashion.

CANNY KLK1 serial passenger lift not only meets the economic and practical purchase needs from the real estate traders, but also accords with the psychological expectations of the residents for the fine safety and reliability, the nice comfort and quick speed, the durable and economical properties. It is fit for the medium and high rise demands. It is a splendid masterpiece and your most ideal choice as well.

卓越品质， 创造最优的价值回报

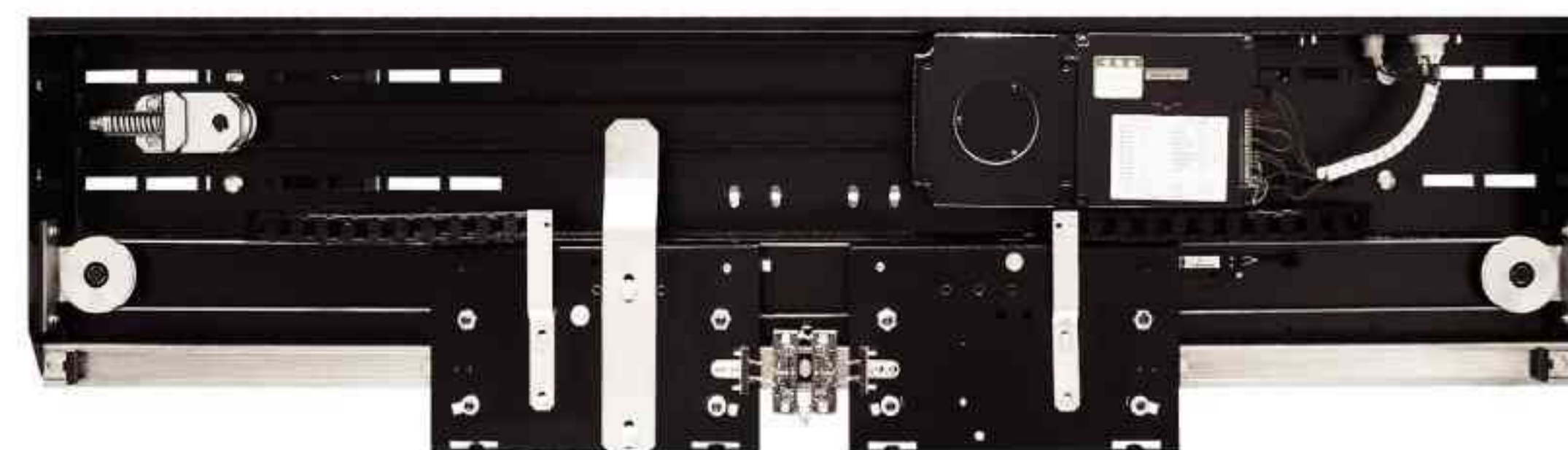
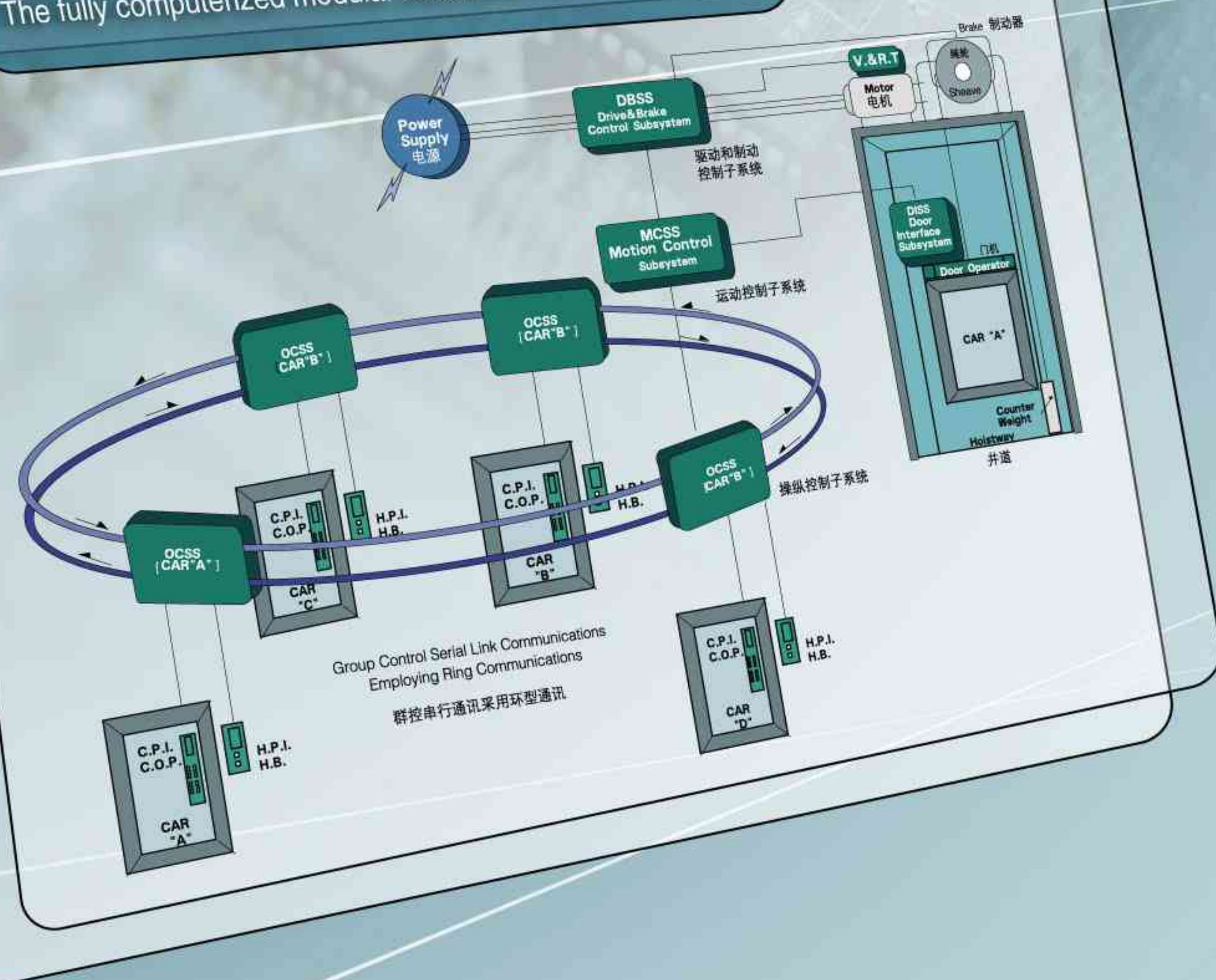
The outstanding quality creates the most optimized value reward.

康力乘客电梯：采用先进的模块化电脑控制技术，集成了串行通讯网络、环型通讯网络、自诊断系统、智能化的集选，群控派梯系统等为一体的控制系统，全面提升了系统的运行效率和可靠性，为您创造最优的价值回报！

CANNY passenger lift employs the excellent control system which integrates the advanced modular computer control technology, the integrated serial communication network, the loop communication network, the self-diagnosis system, the intellectual collective selective, the group supervision dispatch system etc. into a whole. It comprehensively elevates the systematic travel efficiency and the sound reliability. It brings about the most optimized value repay for you!

全电脑模块化数据网络控制系统

The fully computerized modular data network control system



尖端的VVVF变频门机系统

Top-grade VVVF variable frequency door machine system

将先进的VVVF变频控制技术运用到电梯门机系统，确保梯门流畅和宁静开关，提高梯门开关的灵敏度并自动调整每楼层最适合的开关速度以确保安全可靠。而且有自学习能力的门负载检测器更提高了梯门开关的灵敏度，监控每个楼层梯门负载的变化，当受到异常阻力时梯门会自动重新打开。

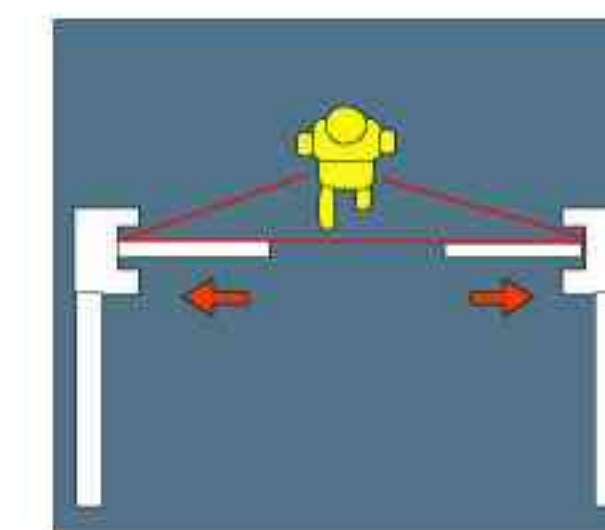
It utilizes the advanced VVVF variable voltage & variable frequency control technology to the lift door machine system so as to ensure the smooth lift door and the quiet switch. It enhances the sensitivity of the lift door switch and automatically regulates the most proper switch speed in every floor to guarantee the fine security and reliability. And the self-tuning door load detector further elevates the sensitivity of the lift door switch. It monitors the lift door load variation of each floor. When it encounters the abnormal drag, it will re-open the lift door.

卓越的串行通讯网络

Extraordinary serial communication network

康力乘客电梯采用串行网络通讯，大量减少布线数，提高可靠性及缩短安装时间。

CANNY passenger lift uses the serial network communication to greatly decrease the wire distribution, increase the reliability and shorten the installation period.



光幕门安全保护
Optical curtain door safety protection

高效矢量VVVF变频器

Effective vector VVVF frequency converter

康力乘客电梯采用矢量控制的数字闭环VVVF变频器，可根据轿厢的实际负载，上下行速度，通过对电流大小和相位的调整，实时精确控制主机转动力矩，平稳地加速或减速，运行舒适性近乎完美。

CANNY passenger lift adopts the vector-controlled digital closed loop VVVF frequency inverter. It can have an accurate real-time control to the dispatcher rotating torque through adjusting the current and phase according to the actual car load and up / down speed. It can smoothly accelerate or decelerate with the nearly perfect travel coziness.



KLK1 乘客电梯技术规格表

KLK1 passenger lift technical specification table

产品型号 Product model	乘客电梯 KLK1
目标市场 Target Market	中高档住宅、商务楼 Medium & high grade buildings
控制系统 Control System	VVVF
曳引机 Traction machine	永磁同步无齿轮 Permanent magnet synchronous & gearless
门机 Door machine	VVVF变频门机 VVVF variable frequency door machine
轿厢高度 Car height	2450mm
额定载重 (公斤) Rated Load(kg)	450/630/800/1000/1150/1250/1350/1600/2000
额定速度 (米/秒) Rated Speed(m/s)	1.0、1.5、1.6、1.75、2.0
最大提升高度 (米) Max.Travel Height	120
最大群控台数 Max.Car Group	8

领先的环保技术开辟和谐绿色空间

The leading environmental protection technology opens up a harmonious green space.

康力乘客电梯应用多项领先的环保高新技术，采用全球推崇的永磁同步无齿轮曳引技术，有效减少耗能，合理节约能源。其自动照明设置、电磁兼容设置、残疾人用梯功能、语音报站，体现人性化设计，为乘客开辟和谐绿色空间！

CANNY passenger lift applies the multiple leading high and new tech of the environmental protection. It utilizes the permanent magnet synchronous & gearless traction machine technology which is famous in the world. It can effectively reduce the energy loss, reasonably save the energy. It shows the humane design from the automatic lighting device, the electro-magnetic compatibility setting, the handicapped lift use functions, the voice arrival. It opens up a harmoniously green space for vast passengers.



永磁同步无齿轮曳引机 The permanent magnet synchronous and gearless traction machine

选用稀土材料，将同轴传动技术、数字变频技术和群组电脑组合控制技术充分融合，高效节能，运行成本最小，热量散失低，工作效率极高，与一般传统技术相比，可节省能源40%之多。而且无齿轮曳引机无需更换油脂，无油污污染，低噪音设计，为您营造宁静的乘坐空间。

It chooses the rare earth materials to fully merge the coaxial drive technology, the numeric variable frequency technology, the group-computer combined control technology with the efficient energy-saving, minimum travel cost, low heat dissipation, extremely high work efficiency. Compared with the common traditional techniques, it can save more than 40% of the energy. And the gearless traction machine needs no renewal of the grease without any oil stain pollution. The low noise design produces a peaceful riding space for you.

自动照明 节约能源

Automatic lighting Energy-saving

康力乘客电梯在无人使用时，轿厢内照明自动熄灭，接到任何召唤命令后自动打开，非常灵活，充分节约了电能的消耗。

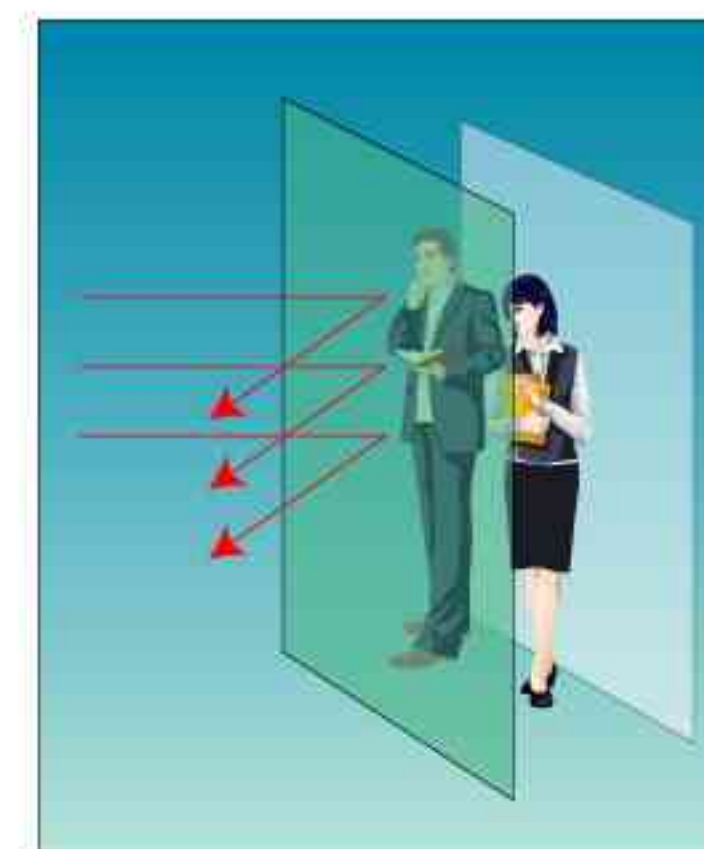
When nobody uses CANNY passenger lift, it automatically dies out the illumination in the car. And it will automatically open the lighting at any calling command. It is very flexible. It can completely save the loss of the electric energy.

抗干扰

Anti-interference

康力乘客电梯，控制系统充分遵循有关电磁兼容性标准，可有效避免大楼内各种精密设备与电梯信号之间的电磁波干扰，消除电磁污染，安居乐业。

The control system of CANNY passenger lift fully abides by the relevant electro-magnetic compatibility standard. It can effectively avoid the electro-magnetic wave interference between the lift signals and various precision equipments. It gets rid of the electro-magnetic pollution and grants you live and work in peace and content.



爱心设计 关怀特殊人群 (可选)

Heart-to-heart design It cares the special people. (Optional)

努力为所有人创造平等的无障碍空间，将残疾人士的需求纳入到电梯的设计理念中，装配残疾人用梯功能，和谐运载，体现康力的爱心所在！

It strives to create an equal and obstacle-free space for all the people. It puts the requirements from the handicapped into the lift design ideas. It assembles with the lift use functions of the handicapped. The harmonious transport indicates a heart-to-heart care!



爱心设计
Humane Design

语音报站 温馨提示 (可选)

Voice Indicator Sweet prompt (optional)

电梯在每次层站过程中，语音报站器会温馨报出即将到达的层楼，在每次关门时，报站器会预报电梯接下去运行的方向，和谐悦耳。

In every lift leveling procedure, the voice announcer will report the arriving floor. It will pre-report the next running direction before the door shut. It is rather pleasing to the ear with the remarkable harmony.



超群智能 服务最佳

Intellectual and outstanding

The best service

为优化电梯服务效能，康力乘客电梯通过采用全电脑智能型控制系统，实现多微机、模块化、网络化控制，群控管理系统、小区监控、ID / IC卡（身份识别）、群控派梯等智能管理，让您准确掌握瞬息万变的运行状况，构建快速反应的电梯专用网络，为乘客提供最佳的服务。

In order to optimize the lift service efficacies, CANNY passenger lift fulfills the intellectual supervision such as the multi-microcomputer, modular and network control, the group supervision system, the residential quarter monitor, ID / IC card (ID identification), group supervision dispatch and so forth. It lets you grasp the instantly-changed travel conditions, construct the rapidly-reacted lift special-purpose network. It furnishes broad passengers with the finest service.

小区监控 呵护到家 (可选)

Considerate care of the residential quarter monitor (optional)

可以通过总线，使控制系统与装在监控室的PC机相连，再加上监控软件，在PC上监控到电梯的楼层位置、运行方向、故障状态等情况，及时处理，呵护到家。

It can connect the control system with PC in the monitor room through the bus. Plus the monitor software, it can monitor the lift floor position, the travel direction, the trouble condition etc. in PC machine with the timely treatment and the great care.



ID/IC卡 (身份识别) (可选)

ID / IC card (ID identification) (optional)

ID/IC卡对电梯的使用加以控制，只有配有ID/IC卡才能用此电梯，极大地加强楼宇管理的安全性，让用户更安心。

ID / IC card controls the lift use. Only ID / IC card only use the lift. It vigorously strengthens the security of the building management. The users can be rest assured in using the lift.



远程监控, 安全无忧 (可选)

long-distance monitor (Optional)

通过有线或无线通讯模块，可实现防患于未然的远程监视系统，在远程监控中心对电梯运行状况和电梯内乘客情况进行实时监控，使故障在发生前就排除，确保乘客安全。

1) 电话网络接入式 2) 宽带网络接入式 3) 无线网络接入式

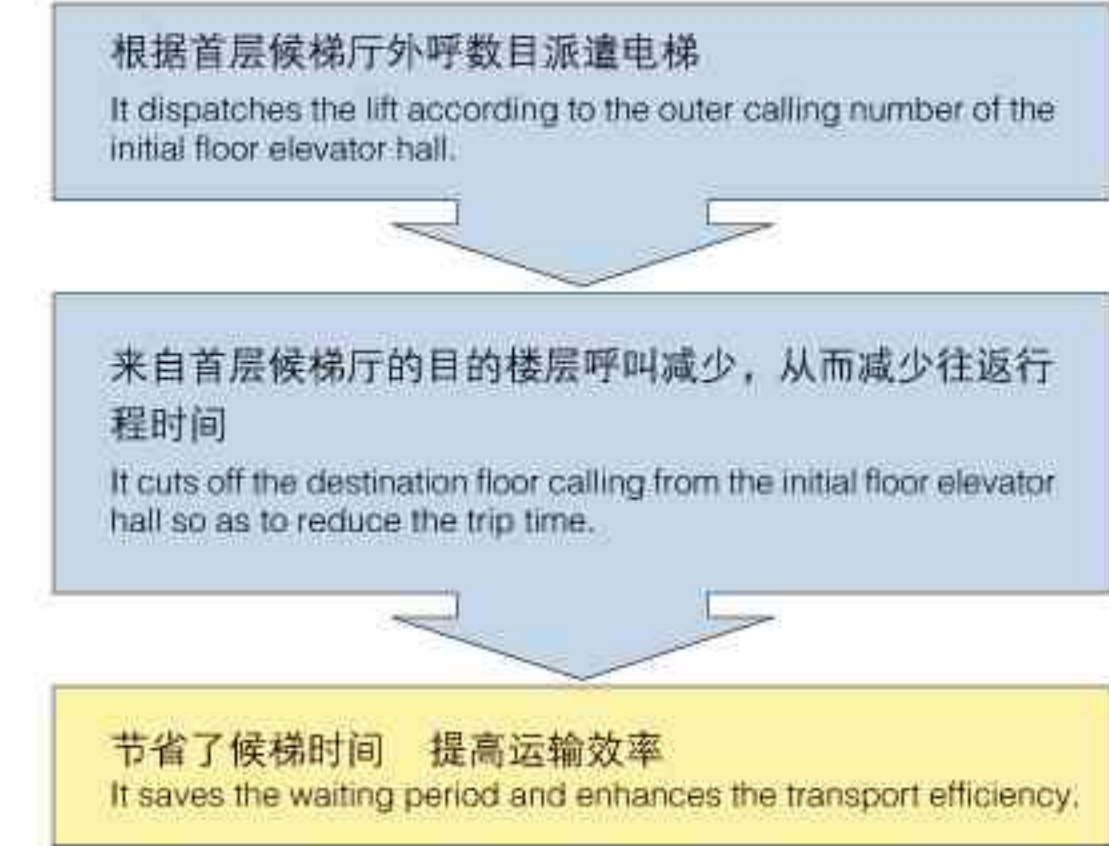
It fulfills the preventative long-distance monitor system through the wired or wireless communication module. It implements a real-time monitor to the lift travel conditions and the passengers' circumstances in the lift through the remote monitor center. It removes the trouble before it happens to ensure the passengers' security.

① Telephone network access mode ② Broadband access mode ③ Wireless network access mode



倾力提供最优异的派梯服务

It goes all out to offer the most excellent dispatch service.



康力乘客电梯以最快速度、最高效率为您提供分散派梯。当群控系统的所有电梯都保持待梯状态一分钟时间，群控系统就开始智能分散待梯，提高电梯的运行效率，减少乘客的等待时间，消除乘客候梯时的烦躁感。

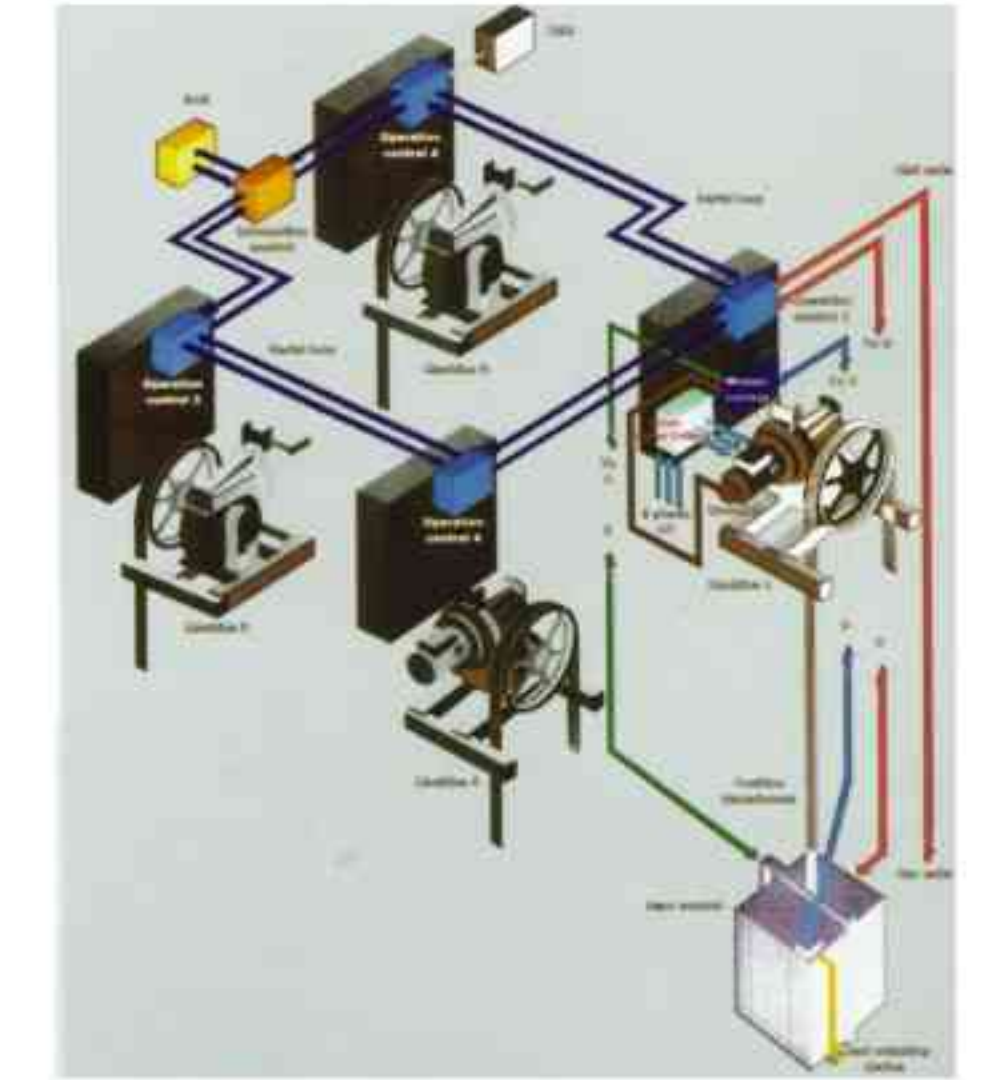
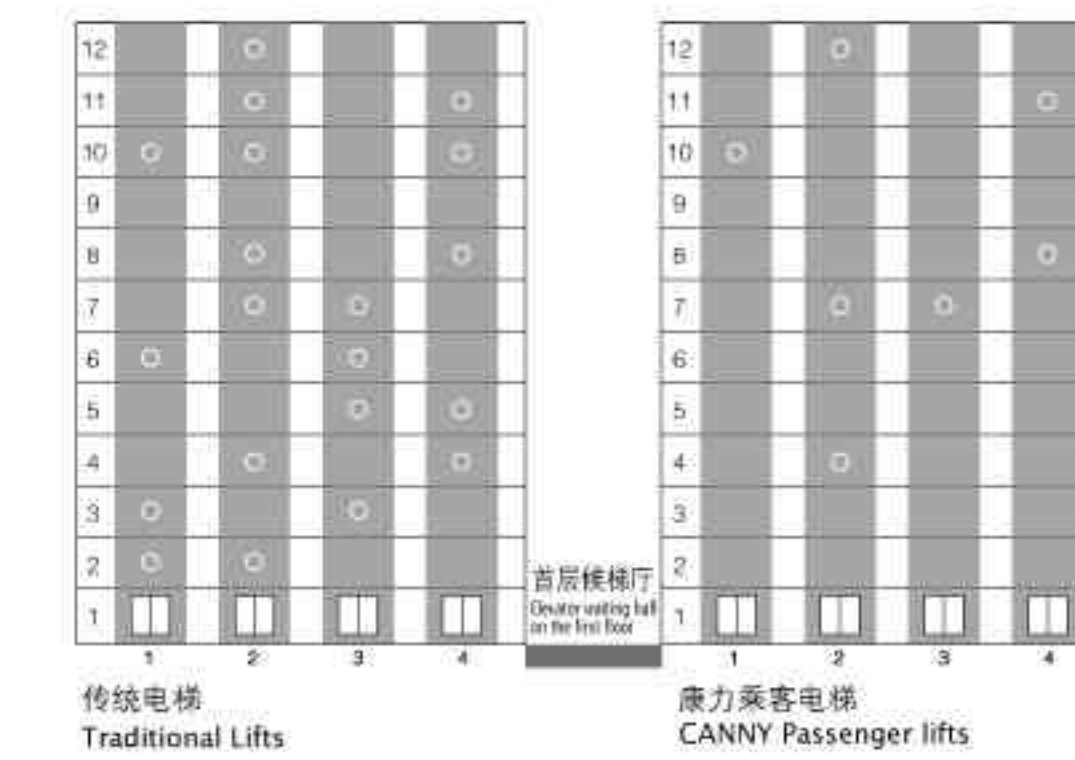
A. 如果基站及基站以下层楼都没有电梯，系统就发一台最容易到达基站的电梯到基站闭门待梯。

B. 如果群控系统中有两台以上电梯正常使用，而且中心层以上层楼没有任何电梯，系统就分配一台最容易到达上方待梯层的电梯到上方待梯层闭门待梯。

CANNY passenger lift furnishes you with the distribution dispatch by the quickest speed and the highest efficiency. When all the elevators in the group supervision system keep waiting for the lift for one minute, the group supervision system will intellectually distribute the waiting elevators in order to raise the lift travel efficiency. It reduces the waiting period of the passengers and removes the frustration of the passengers in waiting the lift.

A. If no lift is available in or below the home landing, the system will dispatch a lift which can most easily reach the main floor to shut the door and wait.

B. If there are more than two lifts that are in normal use in the group supervision system, and no other lifts in the floor above the central floor, the system will dispatch a lift that most easily reaches the upper waiting floor to shut the door and wait.



群控管理系统 (可选)

Group supervision system (optional)

即多台电梯的集中控制，系统用最佳算法计算出每时每刻哪台电梯响应召唤信号最迅速经济和合理，从而分配给最合适的电梯去响应，大大提高电梯的运输效率，减少乘客的等待时间，节约电能。

It is the concentrated control of the multiple lifts. Using the finest calculation, the system dispatches the most prompt; economical and reasonable lift to respond to the calling signal. As a result, it largely enhances the transport efficiency of the lifts. It reduces the waiting time of the passengers and save the electric energy.



紧凑灵巧

载沉载浮

Compact and Flexible
Up / down transport

康力无机房电梯KLV CANNY machine roomless lift KLV

康力新一代无机房电梯开发了专用集成化停电紧急救援装置，达到了无机房国际先进水平，为现代建筑有限空间提供了无限的创造可能。其所有的设备都是安装在井道内，没有机房，提高了建筑设计自由度。与同等载重量有机房电梯相比较，井道结构紧凑，可节约电能40%，节约建筑面积10%。

康力无机房电梯产品特别适用于载重1000Kg及以下，运行速度 1.75m/s及以下的乘客电梯、住宅电梯、观光电梯、及其他电梯，尤其适用于旧楼改造如外钢结构井道架布置电梯。

CANNY new-generation machine room-less lift develops the specially integrated power-interruption automatic rescue device. It reaches an advanced international level for the machine room-less lift. It supplies an infinitely innovative possibility for a limited space in the modern architecture. All the equipments are installed in the well without a machine room. It enhances the free construction design. Compared with the same loading weight lift with a machine room, its compact well structure can save 40% of the electric energy and 10% of the construction area.

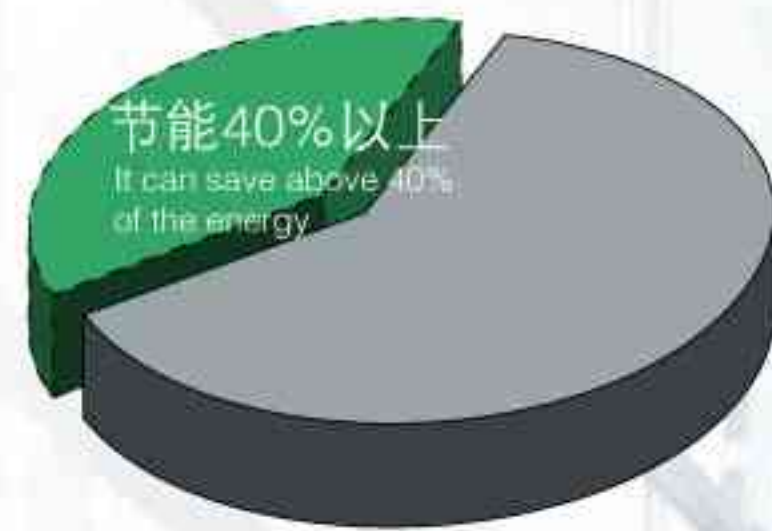
CANNY machine room-less lift products are especially suitable for the passenger lift, residence lift, panorama lift and other lifts in / below 1000kg load, at / under 1.75m/s motion speed. It is esp. applicable for the old building renovation such as external steel construction well stand layout lift.

超常节能 效果显著

Outstanding energy-saving Higher efficiency

康力CANNY无机房电梯采用永磁同步无齿轮曳引机及其适应的控制技术、驱动系统，结构更紧凑，由于特殊的主机构造，无需励磁电流，提高效率25%~30%，损耗下降40%以上，因此节能降耗效果十分明显。

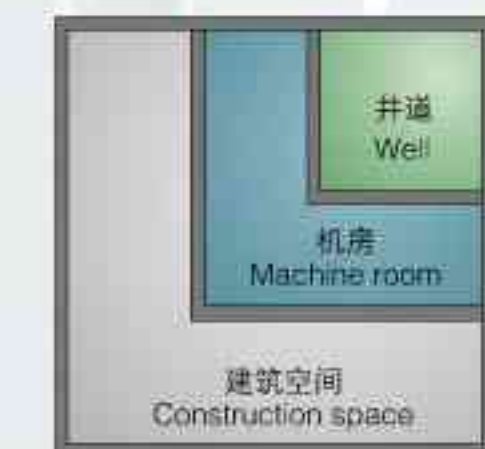
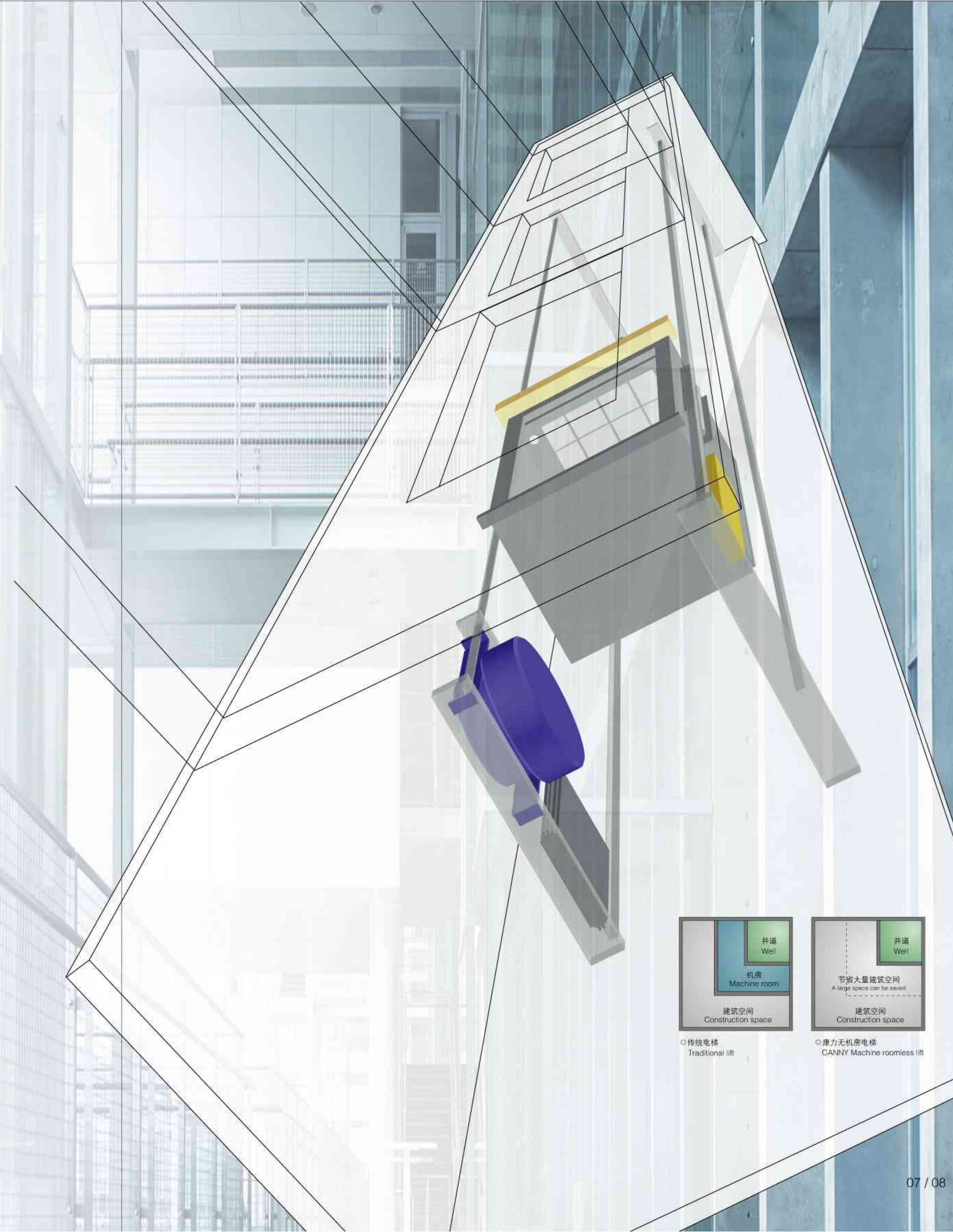
CANNY machine room-less lift uses the permanent magnet synchronous & gearless traction machine and its adaptive control technology, the drive system with the more compact structure. Its special dispatcher construction needs no excitation current. It increases 25% to 30% of the efficiency and reduces above 40% of the loss. Therefore it has the outstanding energy-saving and loss-reduction results.



节能40%以上，提高效率25%~30%。
It can save above 40% of the energy and increase 25% to 30% of the efficiency.

KLV 无机房电梯技术规格表
KLV machine room-less lift technical specification table

产品型号 Product model	KLV无机房电梯 KLV machine room-less lift
目标市场 Target Market	中高档住宅、商务楼 Medium & high grade buildings
控制系统 Control System	VVVF
曳引机 Traction machine	永磁同步无齿轮 Permanent magnet synchronous & gearless
门机 Door machine	VVVF变频门机 VVVF variable frequency door machine
轿厢高度 Car height	2450mm
额定载重(公斤) Rated Load(kg)	630/800/1000/2000
额定速度(米/秒) Rated Speed(m/s)	1.0、1.5、1.6、1.75
最大提升高度(米) Max.Travel Height	60
最大群控台数 Max.Car Group	8



传统电梯
Traditional lift



康力无机房电梯
CANNY Machine roomless lift

平川一步遥

天地任我行

It speedily travels the long distance and the world is at its command.

高速乘客电梯KLK2

High speed passenger lift KLK2

康力高速乘客电梯，集现代科技之精粹与规模效应之优势，将电梯质量提升到一个新的高度，动作更高效、服务更人性化。其采用32位全电脑控制系统，调度合理，能在短时间内完成大量客流的运载，为高端住宅繁忙的交通提供最有效的输送服务。

CANNY speedy passenger lift gathers together the quintessence from the modern science & technology, the large-scale effect advantages. It elevates the lift quality to a new height with the more efficient action and the more humane service. It adopts 32-digit fully computerized control system with the reasonable dispatch. It can finish the transport of a large amount of the passenger flow within a short period of time. It furnishes the busy transport in the top-grade residence with the most effective carrying service.

KLK2 高速乘客电梯技术规格表
KLK2 speedy passenger lift technical specification table

产品型号 Product model	高速乘客电梯 KLK2
目标市场 Target Market	中高档住宅、商务楼 Medium & high grade buildings
控制系统 Control System	VVVF
曳引机 Traction machine	永磁同步无齿轮 Permanent magnet synchronous & gearless
门机 Door machine	VVVF变频门机 VVVF variable frequency door machine
轿厢高度 Car height	2600mm
额定载重（公斤） Rated Load(kg)	1000/1150/1250/1350/1600
额定速度（米/秒） Rated Speed(m/s)	2.5、3.0
最大提升高度（米） Max.Travel Height	120
最大群控台数 Max.Car Group	8

标准配置 Standard Configuration



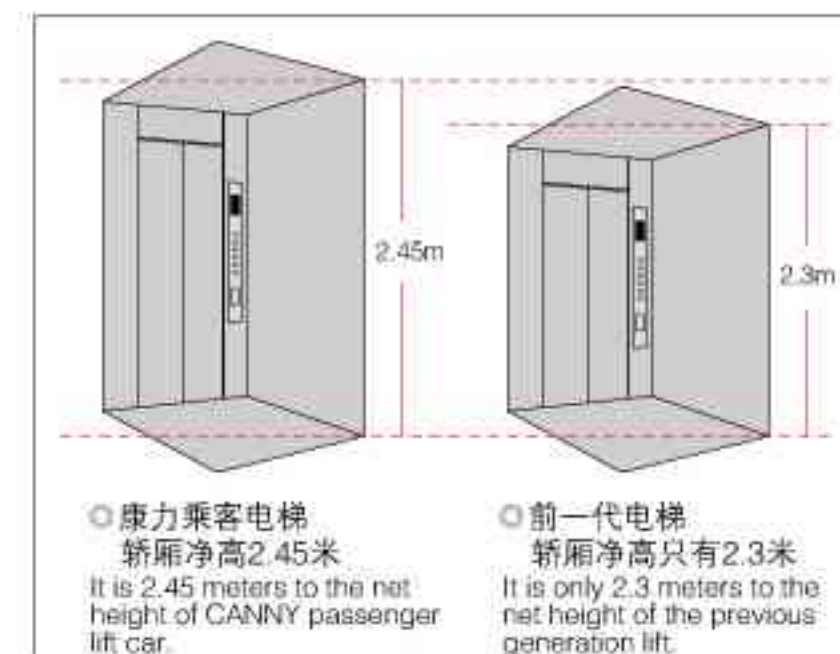
KL-K 001

俯仰之间 赏心悦目

It is pleasing to both the eyes and the mind in up / down process.

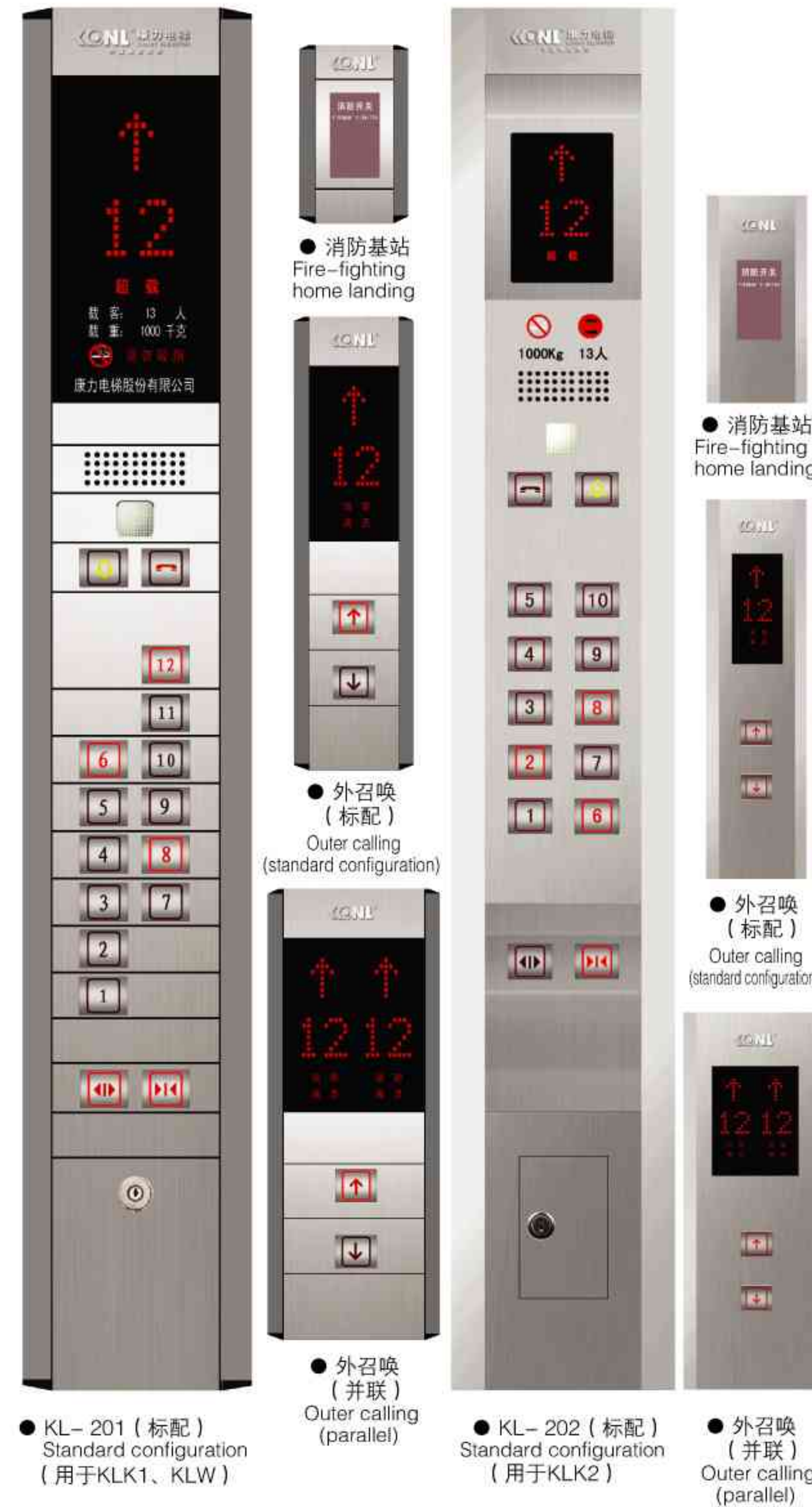
设计新颖高雅、空间宽敞明亮,吊顶、轿厢壁和地板可以任意排列组合,满足个性化要求,彰显华贵气质。

The novel and graceful design, the broad and bright space, it can wantonly arrange and combine the ceiling, floor and car wall. It meets the individual demands and displays an aristocratic personality.



吊顶: KL-D 001型(标配)	Ceiling: KL-D 001 style(standard configuration)
轿壁: 发纹不锈钢	Car wall: Hairline stainless steel
轿门: 发纹不锈钢	Car door: Hairline stainless steel
地板: KL-JD 001	Floor: KL-JD 001

大气的一体式操纵盘,显示强大的力量感。
排列整齐的按钮充满理性的美感,反应灵敏,操作方便!只需轻轻触摸,即可发出操纵指令。指点之际,让你感受更多的关怀和爱心。
显示器外面经过特殊工艺处理,搭配晶莹剔透的界面显示,华贵而时尚。
The imposing integrated operation panel shows the powerful strength.
The tidily-arranged button is full of the rational aesthetics. It is of the sensitive reaction and easy operation! Only a slight touch can send the operation command. You can feel the more care and love in its operating process.
The external display has been treated by the special craft and technology. It matches with the transparent and crystal-like interface display. It is noble and trendy.



● KL-D 001 (标配 standard configuration)
双拱形白色有机透光板,加中部筒灯的柔光照明设计,使轿厢内的采光更加明亮。
It can be brighter to the car lighting from the double arched white organic light-emitting board plus the gentle light illumination design of the mid down light.



● KL-TM001 (标配 standard configuration)
首层为发纹不锈钢,其他层为喷塑。
The home floor is of the hairline stainless jamb and other floors are of the plastic jet jamb.

选配轿厢
Optional Car

KL-K 002



吊顶: KL-D 002 (可选)
轿壁: 喷塑钢板
轿门: 喷塑钢板
地板: KL-JD 006
Ceiling: KL-D 002(optional)
Car wall: Steel plate plastic jet
Car door: Steel plate plastic jet
Floor: KL-JD 006

KL-K 003



吊顶: KL-D 009 (可选)
轿壁: 发纹不锈钢, 镜面, 蚀刻
轿门: 发纹不锈钢
扶手: KL-FS 001
地板: KL-JD 006
Ceiling: KL-D 009 (optional)
Car wall: Hairline stainless steel, Mirror, etched stainless steel
Car door: Hairline stainless steel
Handrail: KL-FS 001
Floor: KL-JD 006

KL-K 004



吊顶: KL-D 006 (可选)
轿壁: 发纹不锈钢, 横蚀刻
轿门: 发纹不锈钢
扶手: KL-FS 003
地板: KL-JD 005
Ceiling: KL-D 006(optional)
Car wall: Hairline stainless steel & etched stainless steel
Car door: Hairline stainless steel
Handrail: KL-FS 003
Floor: KL-JD 005

KL-K 005



吊顶: KL-D 008 (可选)
轿壁: 钛金不锈钢、蚀刻不锈钢
轿门: 钛金不锈钢
扶手: KL-FS 004
地板: KL-JD 006
Ceiling: KL-D 008(optional)
Car wall: Titanium gold stainless steel, etched stainless steel
Car door: Titanium gold stainless steel
Handrail: KL-FS 004
Floor: KL-JD 006

KL-TM 001 (标配 standard configuration)



小门套
Small jamb

厅门: 发纹不锈钢
门套: 发纹不锈钢

Landing door: Hairline stainless steel
Jamb: Hairline stainless steel

KL-TM 002 (标配 standard configuration)



小门套
Small jamb

厅门: 喷塑钢板 (颜色可按色卡选择)
门套: 喷塑钢板

Landing door: Steel plate plastic jet
(The color can be chosen according to the color card.)
Jamb: Steel plate plastic jet

KL-TM 003 (可选 optional)



小门套
Small jamb

厅门: 蚀刻不锈钢
门套: 发纹不锈钢

Landing door: Etched stainless steel
Jamb: Hairline stainless steel

KL-TM 004 (可选 optional)



小门套
Small jamb

厅门: 蚀刻不锈钢
门套: 发纹不锈钢

Landing door: Etched stainless steel
Jamb: Hairline stainless steel

吊 顶 Car ceiling



KL-D 002 (可选 optional)

发纹不锈钢框架, 亚克力灯饰板 (井字格), 亚克力条形灯饰。
Hairline finished st./st.frame with Acrylic top panel, checked.



KL-D 003 (可选 optional)

发纹、镜面不锈钢组合, 亚克力顶板, 内置灯光。
Mirror finished & Hairline finished Comb. st./st.Frame with Acrylic top panel, inner lights fixture.



KL-D 004 (可选 optional)

发纹不锈钢框架, 两侧亚克力灯饰, 中间多层次透光板。
Hairline finished st./st.frame with multi-layer lighting board, Acrylic lighting decoration at sides.



KL-D 005 (可选 optional)

喷塑钢板框架, 两侧亚克力灯饰, 中间多层次透光板。
Steel plate plastic jet frame with multi-layer lighting board, acrylic lighting deco.



KL-D 006 (可选 optional)

发纹不锈钢框架, 拱形顶板加条形灯饰。
Hairline finished st./st.frame, Acrylic lighting cover.



KL-D 007 (可选 optional)

发纹不锈钢框架, 拱形顶板加筒灯。
Hairline finished st./st.frame, Acrylic lighting cover, Tube lamp.



KL-D 008 (可选 optional)

钛金不锈钢框架, 亚克力灯饰板, 亚克力条形灯饰。
Ti-plated st./st. frame with Acrylic top panel, checked.



KL-D 009 (可选 optional)

发纹不锈钢框架, 奶白灯罩, 中间长格条照明。
Hairline stainless steel frame, creamy white lampshade, long lettuce lighting in the middle.

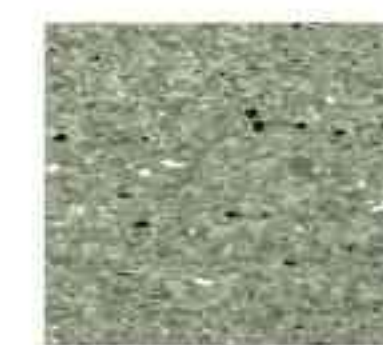
地 板 (可选) Floor(optional)



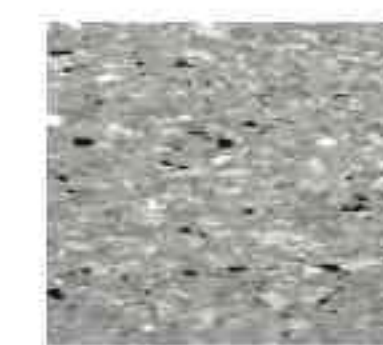
KL-JD 001



KL-JD 002



KL-JD 003



KL-JD 004



KL-JD 005



KL-JD 006



KL-JD 007



KL-JD 008

扶 手 (可选) Handrail(optional)



KL-FS 001



KL-FS 002



KL-FS 003



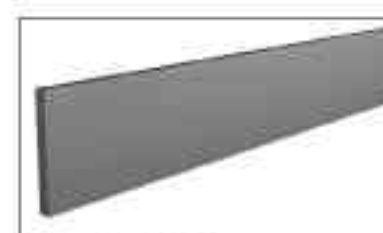
KL-FS 004



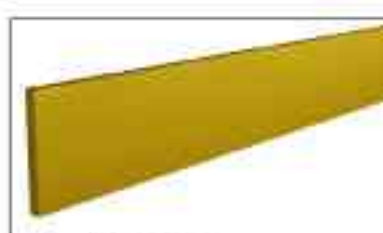
KL-FS 005



KL-FS 006



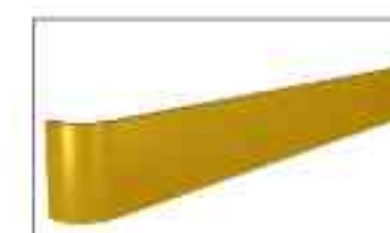
KL-FS 007



KL-FS 008



KL-FS 009



KL-FS 010

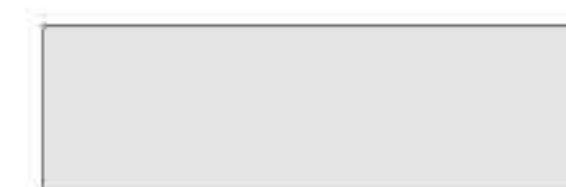


KL-FS 011



KL-FS 012

喷塑色标 (可选) Plastic jet color standard (optional)



KL-SK 001
冰灰
Ice gray



KL-SK 002
飞机灰
Plane gray



KL-SK 003
米黄
Corry yellow

基本功能 Basic Functions

名称 Name	电梯动作说明 Lift actuation description
自动运行 Automatic running	到站自动开门；自动延时关门；自动提前关门(门开未到延时关门时间时)；内选自动登记(防捣乱、误操作消除)；外召顺向自动载车；外召反向最高(或最低)自动载车。 Arrival automatic door-open, automatic time-delay door open, dynamic pre-opening of door (when the door-open does not reach the time-delay door-shut time,) internally selective automatic register (anti-nuisance, accidental operation removal), outer calling clockwise automatic stop, outer calling reversal highest (or lowest) automatic stop.
司机运行 Driver running	到站自动开门；手动关门；内选自动登记(防捣乱、误操作消除)；外召自动顺向载车。 Arrival automatic door-open, manual door-shut, internally selective automatic register (anti-nuisance, accidental operation removal), outer calling automatic clockwise stop.
检修运行 Inspection travel	将系统设置为检修状态后，按慢上或慢下按钮，电梯会以检修速度向上或向下运行，松开按钮后停止。 After it sets the system into the inspection condition, if you press "slow up" or "slow down" button, the lift will operate upwards or downwards by the inspection speed. When it loosens the button, it will stop the operation.
上电自动开门 Electrified automatic door-open	正常情况下，每次电梯系统通电后，如果轿厢正在门区，则轿门自动打开。 Under the normal conditions, every time it electrifies the lift system, if the car is in the door zone at that time, then it will automatically open the car door.
自动关门延时 Automatic door-shut time-delay	轿门完全打开后，保持开门状态，经过延时后自动关门。 After it completely opens the door, it will keep the door-open condition and automatically shut the door after time-delay.
本层外召开门 Local outer calling door-open	电梯正在关门或已关门但未启动时，若本层外召，则重新开门。 When the lift is shutting the door or it has shut the door but not being started, if there is a local outer calling, it will re-open the door again.
安全触板 光幕保护 Optical curtain protection to the safety edge	安全触板或光幕被挡时，关门动作立即停止并自动开门。 If the safety edge or optical curtain has been warded off, it will immediately stop the door-shut actuation and automatically opens the door.
超载不关门 None door-shut in overload	载时不关门、超载灯亮、蜂鸣器鸣响、轿厢内显示CZ、电梯不启动。 It does not shut the door in overload. It is bright to the overload lamp and rings the buzzer. It shows CZ in the car and does not start the lift.
满载直驶 Full-load bypass	达到额定载荷时，只响应内选，不响应外召。 When it reaches the rated load, it will only respond to the internal selection and not respond to any outer calling.
司机控制直驶 Driver control bypass	有司机运行时，按下直驶按钮，电梯只响应内选，不响应外召。 When a driver operates the lift, press bypass button, the lift will only respond to the internal selection and will not respond to any outer callings.
运行状态显示 Running condition display	通过控制柜内主控电脑板上的液晶显示器显示电梯运行的状态、方向、所处楼层、轿门状态、负载状况及故障信息等。 It shows the lift running condition, direction, floor, car door condition, load condition, trouble information etc. through the liquid crystal display in the main-control computer panel of the control cabinet.
照明自动开关 Automatic switch of lighting	15分钟内电梯无人使用时，轿厢内照明将自动熄灭，接到任何召呼命令后自动打开。 If nobody uses the lift within 15 minutes, it will automatically die out the illumination in the car, whereas it will automatically open the lighting at receiving any calling command.
故障自动靠站 Automatic parking at trouble conditions	若快车运行时发生故障停止在非门区，则轿厢向中间楼层方向爬行至平层位置后开门。 If the lift runs at a quick speed, then gets into trouble and park in none door zone, the car will creep to the mid floor direction and open the door at the leveling position.
消防运行 Fire-fighting operation	清除所有内选外召信号，返回消防基站，门常开输入消防联动信号。 After it gets rid of all the inner-selection and outer-calling signals, it will return to the fire-fighting base, keep normal-open of the door and output the fire-fighting linkage signal.
误操作消除 Accidental operation removal	重复按一次内选按钮，即可撤销误选登记(内选灯灭)。 If repeatedly press inner-selection button, it can cancel the error register. (It dies out the inner selection lamp.)
防捣乱 Anti-nuisance	当电梯运行至最远端楼层换速时，清除所有的内选登记；电梯轻载时内选最多登记3个，多选无效。 When the lift runs to the furthest floor to change the speed, it will cancel all the inner selection registers. It can internally choose 3 registers to the greatest extent in the light load. It is ineffective for more selections.

基本功能 Basic Functions

名称 Name	电梯动作说明 Lift actuation description
外召按钮嵌入自诊断 Inlaid self-diagnosis of the outer calling button	若某一外召按钮按下持续时间超过20秒，系统则认为该按钮嵌入(不能复位)，对该层外召不予登记，且该按钮对应的外召应答不断闪烁报警。 If certain outer calling button has been continuously pressed for more than 20 seconds, the system takes it as an inlaid button (can not be reset), it will then not register the outer calling of this floor and keep flickering & alarming to the corresponding outer calling of this button.
到站钟 Arrival gong	在电梯减速平层过程中会鸣响装在轿顶的到站钟，以提醒轿内乘客和厅外候梯乘客电梯正在平层。 It will ring the arrival gong at the car top in the lift decelerating & leveling process so as to remind the passengers in the car and out of the hoist-way door that the elevator is leveling now.
重复关门 Repeated door-shut	执行关门指令后，在规定的时间内门门锁回路没有接通时，重新开门后再关门。 After executing the door-shut command, if the door interlocking loop has been not connected within the stipulated time, it would reopen the door and then shut it off again.
故障诊断 Trouble diagnosis	当运行发生故障时，自动诊断出故障产生原因，并在液晶显示屏上显示故障信息；将最近10次故障发生的时间、类型及故障楼层等信息保存在“故障报告”菜单中，以供维修人员查看。 If the operation gets into trouble, it will automatically diagnose the cause(s) and display the trouble information in the liquid crystal display screen. It stores the time, category, troubled floor etc. of 10 latest troubles in the "trouble report" menu for the repairers to check.
驻停控制 Parking control	当设置在指定楼层的钥匙开关动作后，电梯将在应答完所有指令后返回指定楼层，同时将启用节能模式，切断轿内照明并点亮外停梯开关指示灯。 When it actuates the key switch in the designated floor, the lift will return to the designated floor after responding to all the commands, meanwhile it will start the energy-saving mode, cut off the illumination in the car and lighten the outer switch indicating lamp.
机房选层 Machine room floor selection	通过控制柜内液晶显示器的按键操作，进行内选登记。 It carries out the internal selection and register through the press key operation to the liquid crystal display in the control cabinet.
机房开关门 Machine room door open / shut	通过控制柜内液晶显示器的按键操作，进行开关门命令输入。 It inputs the door open / shut command through the press key operation of the liquid crystal display in the control cabinet.
不停层设置 None floor stop setting	通过所设楼层时不停靠。 It will not park at the set floor.
待楼层设定 Setting of the lift waiting floor	在无司机状态、在一定时间内既无内选也无外召时，轿厢自动运行到待命层。 Under the no driver conditions, if it has no internal selection or outer calling in certain period of time, the car will automatically run to the waiting floor.
楼层显示字符的任意设定 Wanton setting of the floor display character	通过控制柜内液晶显示器的按键操作任意设置各楼层的显示字符(英文字母或有符号的数字)。 It can wantonly set the display characters (English characters or numbers with symbols) of various floors through the press key operation of the liquid crystal display of the control cabinet.
定时自动开关梯 Timing of automatic start / stop	系统按所设置开梯/关梯时间自动开梯/关梯(驻停)。 The system will automatically start / stop (or park) according to the set timing.
司机选择定向 Directional selection of the driver	行驶启动前按上、下方向按钮可优先确定运行方向。 It can give priority to the running direction in pressing up / down button before starting the drive.
专用运行 Special running	此状态下外召按钮无效，电梯运行完全由轿厢内司机控制，开关门方式同有司机状态。 It is ineffective to the outer calling button under such conditions. The driver inside the car completely controls the lift operation. The door open / shut modes are the same as that with the driver.
干扰评价 Interference assessment	对现场控制柜接地(抑制干扰源)情况、井道线接地(可靠屏蔽)情况作出相应评价，指导调试人员排除隐患，为微机控制系统提供更加可靠安全的工作环境。 It makes the corresponding assessment to the site control cabinet grounding (restricting the interference source), well wire earthing (the reliable shield) conditions. It directs the adjusters to remove the hidden danger and provides the micro-computer control system with the more secure and reliable work environments.
编码器评价 Coder assessment	对编码器脉冲信号进行了分析与评价，最大限度避免由编码器引起的电梯故障，直观地引导调试人员排除电梯抖动、不平层等故障。 It analyzes and assesses the coder pulse signal and avoids the lift trouble caused by the coder to the greatest extent. It visually guides the adjusters to remove the lift tremble, un-leveling etc.

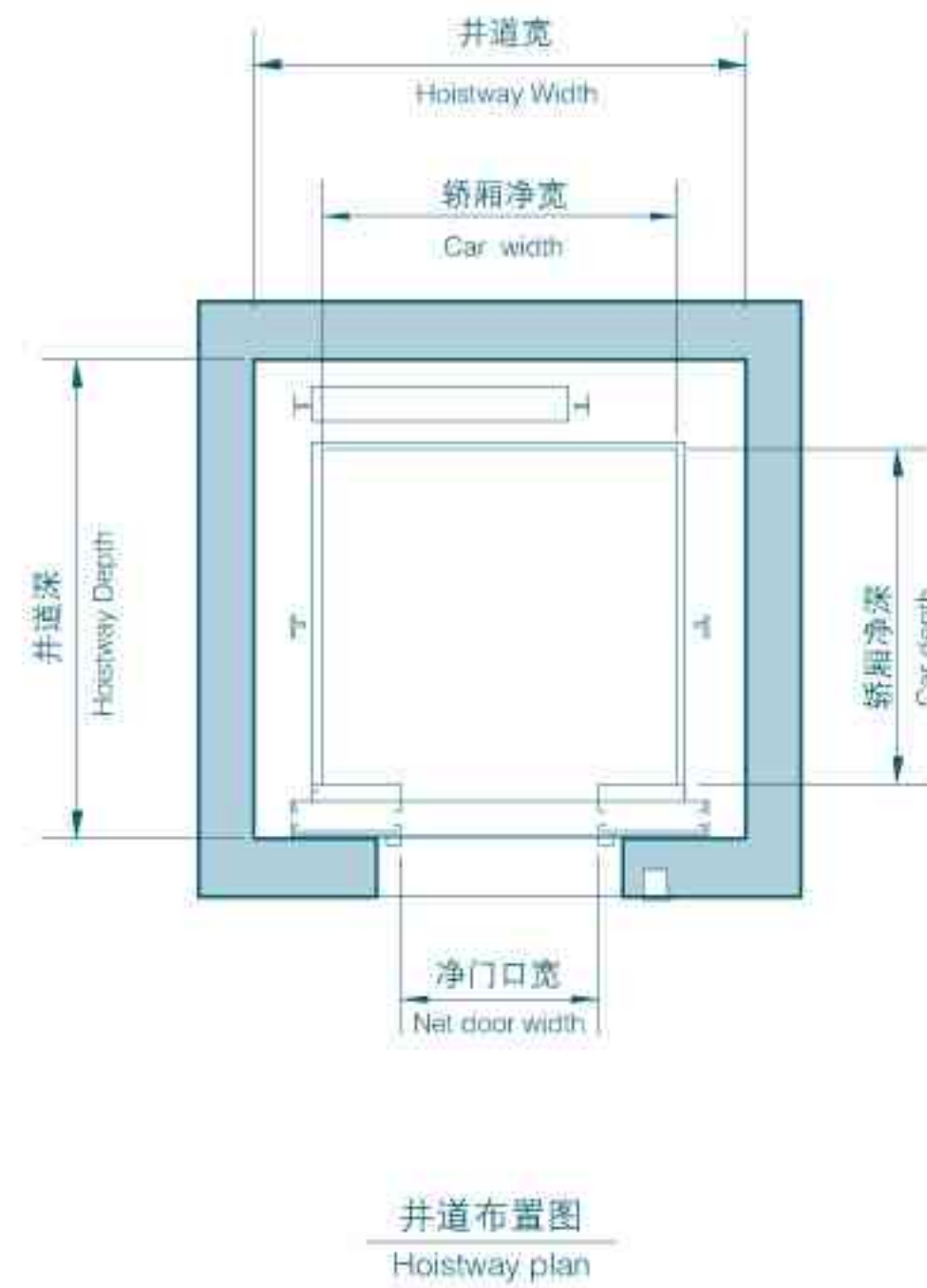
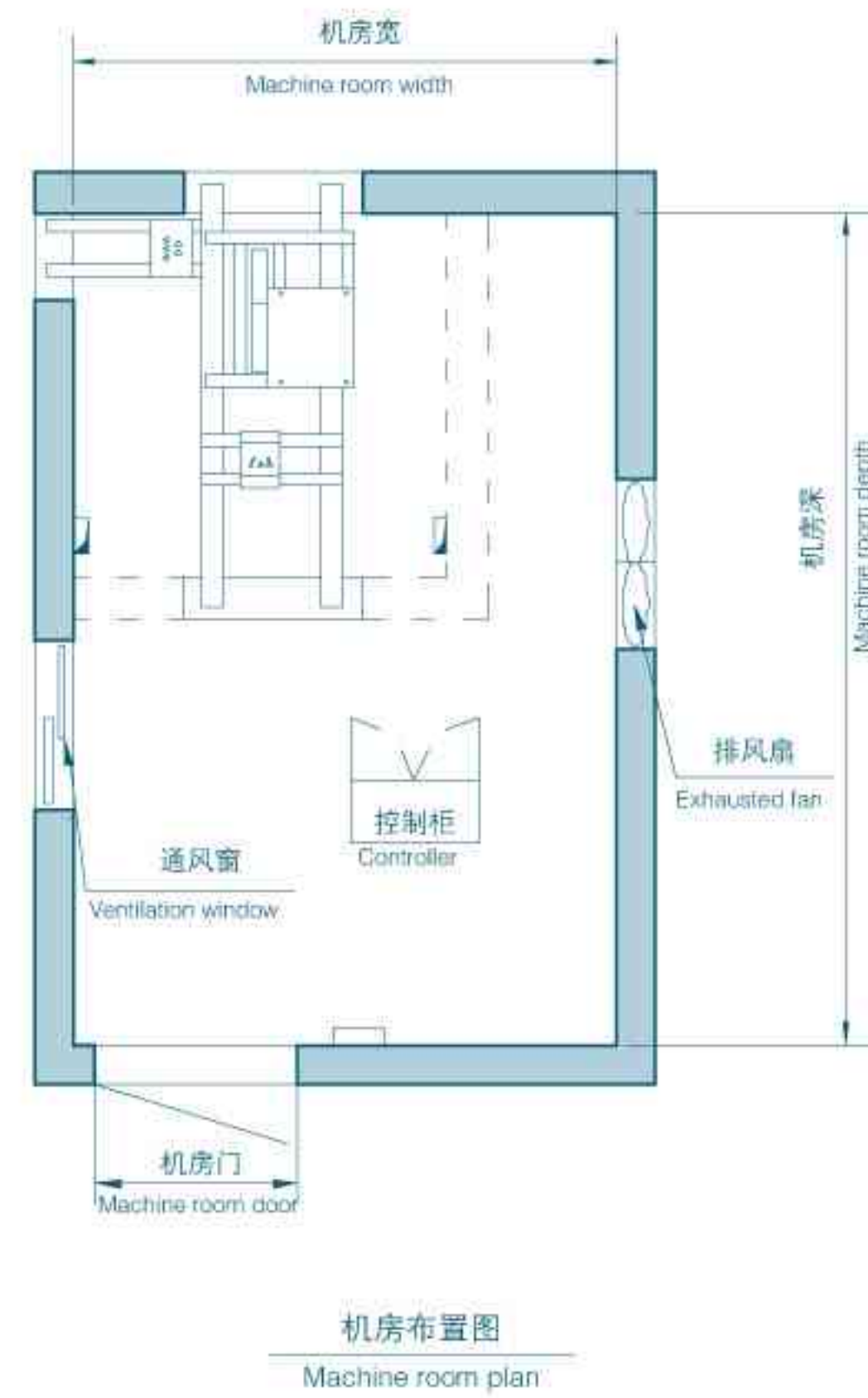
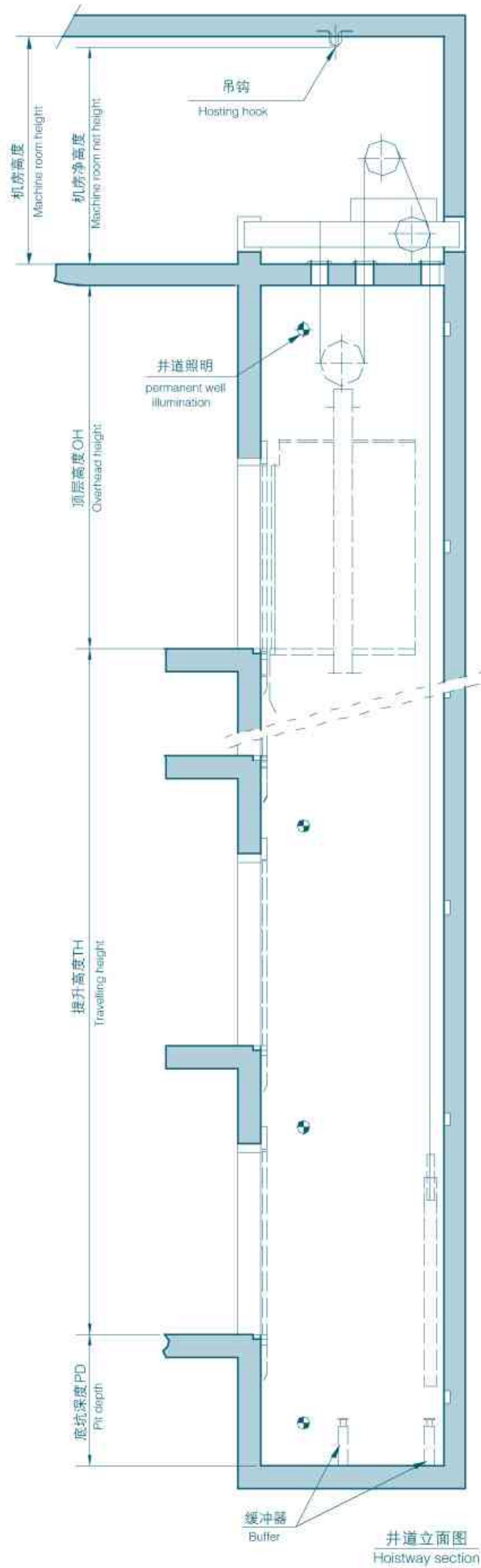
基本功能 Basic Functions

名称 Name	电梯动作说明 Lift actuation description
输入口干扰评价 Input port interference assessment	系统可对输入信号进行评价并通过控制柜内液晶显示器显示出来, 指示作业人员对井道线及随行电缆合理布线、妥善接地, 从根本上消除因某些随行电缆及井道线与主控电脑板并行连接对主控电脑板输入产生干扰而造成的电梯层显串号、不平层等故障。 The system assesses and displays the input signal through the liquid crystal display in the control cabinet so that it directs the operators to reasonably distribute the well wires and accompanying cables with the proper earthing. It fundamentally solves the troubles such as the floor skip, un-leveling etc. caused by the interference to the main control computer panel input due to the parallel connection between certain cables; well wires and the main control computer panel.
紧急电动 Emergency electric start	紧急电动是在安全回路出现故障, 正常的动力电源可以正常供给的情况下采取的一种紧急措施(短接部分安全回路), 以便在最短的时间内释放被困在轿厢内的人员, 恢复电梯的正常使用。 Emergency electric start is an emergency measure that can be adopted under the condition that it has the normal power supply when there is something wrong with the safety loop (the safety loop in jump out part) so that it can release the passengers who are stranded in the car within the shortest time possible and restore the normal use of the elevator.
井道自学习 Well self-tuning	检修状态下自下限位开关起向上运行至上限位开关止, 测出各楼层的门区位置及井道开关位置的数据, 并永久保存。 Under the inspection conditions, it runs upwards from the lower limit switch to the upper limit switch. It detects the door zone position of various floors and the data of the well switch position for the eternal storage.
逆向运行保护 Reverse running protection	当系统检测到电梯连续3秒钟运行的方向与指令方向不一致时, 就会立即紧急停车, 故障报警, 并在CPU复位前, 禁止电梯一切动作。 When the system detects that the lift running direction does not coincide with the command direction in 3 continuous seconds, it will have an immediate emergency stop and make a trouble alarm. It is forbidden to have any actuations before CPU reset.
防打滑保护 Anti-slippery protection	系统检测到钢丝绳打滑将停止轿厢一切运行。并直到CPU复位才能恢复正常运行。 When the system detects the slippery wire rope, it will stop all the car operations until CPU reset which restores the normal running.
防溜车保护 Anti-skating protection	系统检测到电梯停梯时, 连续3秒钟有反馈脉冲产生, 就判定电梯发生溜车, 所以将停止轿厢一切运行, 并在CPU复位前电梯始终不能动作。 When the system detects that the feedback pulse produces in 3 continuous seconds during the lift stop, it will judge the skating of the lift, stop all the car operation. It will always not actuate before CPU reset.
安全回路保护 Safety loop protection	安全回路断开, 电梯将立刻停止运行。 When it disconnects the safety loop, the lift will immediately stop the operation.
限位保护 Limit protection	系统检测到限位开关动作, 将立刻停止电梯运行。 When the system detects the limit switch actuation, it will immediately stop the lift running.
极限保护 Ultimate protection	系统检测到极限开关动作, 整个系统将立刻掉电。 When the system detects the ultimate switch actuation, the whole system will immediately be de-energized.
门联锁保护 Interlock protection	全部门联锁都闭合, 电梯方能运行。如运行中门联锁断开或抖动, 电梯将停止运行。 Until it closes all the interlocks, can the lift be operated then. If it disconnects or trembles the interlock in the operation, the lift will stop the running.
运行接触器保护 Running contactor protection	系统可检测电机回路接触器动作是否可靠。如发现异常(未吸合或粘连), 将停止电梯运行。 The system can detect whether the motor loop contactor actuation is reliable or not. If any abnormal conditions (no pick-up or adhesion) occur, it will stop the lift running.
抱闸检测保护 Braking detection protection	通过抱闸臂检测开关对抱闸的打开与闭合实时监测。当抱闸未按要求打开时, 系统将禁止电梯启动。 It implements a real-time monitor to the brake open / shut through the braking arm detection switch. If the brake does not open upon the request, the system will prohibit the lift start.
端站换速及楼层号校正 Terminal speed change and floor number correction	系统在运行中检测到端站开关后, 电梯将强迫换速并自动校正楼层显示。 When the system detects the terminal switch in running, the lift will be forced to change the speed and automatically correct the floor display.
手动松闸救援 Manual brake release aid	非平衡状态下, 远程手动松闸, 慢速溜车, 进入门区后自动报警, 手动开门救援。 Under the non-balancing conditions, it makes a remote manual brake release and slow skating. It automatically alarms after entering into the door zone with the manual door-open aid.

可选功能 Optional functions

名称 Name	电梯动作说明 Lift actuation description
残疾人用梯功能 The functions of the lift for the handicapped	通过参数设置启用残疾人用梯功能, 残疾人操纵盘、外呼; 设残疾人内选指令、开关门输入按钮; 使用通用外呼板, 通过地址区分是残疾人外呼还是普通外呼; 平层时, 如本层有残疾人内指令或外呼, 本次开门保持时间加长(开门延长可设), 如按下残疾人操纵盘开门按钮, 本次开门保持时间加长(开门延长可设)。 It uses the parameters to set and adopt the functions of the lift for the handicapped, the operation panel and outer calling for the handicapped, the inner selection commands for the handicapped, door open / shut input button, the general-purpose outer calling panel. It divides the ordinary outer calling from the outer calling for the handicapped by distinguishing the address. In the leveling, if there is any inner command or outer calling from the handicapped, it will lengthen the door open time. (It can set to prolong the door open time.) If you press the handicapped operation panel door open button, it will prolong the door open period this time. (It can set to prolong the door open time.)
远程监控 Long-distance monitor	通过有线或无线通讯模块, 可以在远程监控中心对电梯运行状态进行实时监控。 It can implement the real-time monitor to the lift running condition in the remote monitor center through the wired or wireless communication module.
小区监控 Residential quarter monitor	通过总线, 控制系统与装在监控室的PC机相连, 再加上监控软件, 就可以在PC上监控到电梯的楼层位置、运行方向、故障状态等情况。 The control system connects with PC in the monitor room through the bus. Plus the monitor software, it can use PC to monitor the lift floor position, running direction, trouble condition etc.
语音报站 Voice arrival	系统在配有语音报站功能时, 电梯在每次平层过程中, 语音报站器将报出即将到达的层楼, 在每次关门前, 报站器会预报电梯接下去运行的方向, 等等。 When the system is allocated with the voice arrival function, the voice announcer will report the arriving floor in every leveling process. Before the door shut each time, the announcer will pre-report the next lift running direction etc.
并联运行 Parallel running	并联控制就是两台电梯通过CAN串行通讯总线进行数据传送以实现两台电梯协调响应层站召唤的功能, 从而提高电梯的运行效率。 The parallel control aims at fulfilling two lifts' coordinated responding to the landing call through the data transmission from CAN serial communication bus so that it can enhance the lift running efficiency.
群控运行 Group supervision running	群控, 即多台电梯的集中控制, 系统最多可做到八台电梯群控。在群控系统使用中, 使群控能自动选择最合适的应答, 避免电梯重复停梯, 缩短乘客候梯时间, 提高运行效率, 节约电能。 The group supervision means the concentrated control of the multiple lifts. The system can have a group supervision of maximum 8 lifts. In using the group supervision system, the lift group can automatically choose the most appropriate response so as to avoid the repeated lift stop, reduce the passengers' waiting period and increase the running efficiency, save the electric energy.
后备运行 Spare running	当群控时有此选配功能。 It is optional in the group supervision.
连续运行 Continuous running	当群控时有此选配功能。 It is optional in the group supervision.
上班高峰服务 On-duty peak service	当群控时有此选配功能。 It is optional in the group supervision.
分散待梯 Distribution waiting	当群控时有此选配功能。 It is optional in the group supervision.
身份识别 ID identification	对电梯的使用加以控制, 只有配有ID/IC卡才能用此电梯。 It controls the lift use. Only ID/IC card can use the lift.
BAS功能 BAS function	对整个电梯的运行状况进行监视。 It monitors the whole lift running conditions.
液晶显示 Liquid crystal display	液晶显示分轿内液晶显示跟外召液晶显示。 The liquid crystal display is divided into car liquid crystal display and outer calling liquid crystal display.
电梯应急装置 Lift emergency device	电梯应急装置是针对电梯由于停电或故障而导致中途突然停止运行时, 该装置会迅速动作, 驱动电梯低速运行至平层位置, 平层后, 开门疏散乘客。 If the lift suddenly stops the running in the mid way due to some trouble or power failure, this device will actuate rapidly to slowly drive the lift to the leveling position. After the leveling, it opens the door to evacuate the passengers at the same time.
贯通门 Opposite door	控制贯通门在相应楼层的正确开、关动作。 It controls the opposite door for the correct open / shut in the corresponding floor.
提前开门功能 The function of door-open ahead of time	电梯正常减速运行到目的层门区后, 满足提前开门条件, 电梯将提前开门。 When the lift normally decelerates to the destination landing door zone, if it satisfies the function of opening the door ahead of time, it will do so.
再平层功能 Re-leveling function	电梯停在当前层, 当过多乘客进入电梯或离开电梯时, 由于钢丝绳的伸长或缩短, 轿厢脱离平层区域(门区感应器有一个脱离); 电梯将在开门的情况下启动低速运行至平层点。 After the lift parks at the current floor, as too much passengers enter into or leave the lift, it results in the expansion or shrink of the steel rope, the car will be separated from the leveling zone. (There is a separation in the door zone inducer.) Under the door open conditions, the lift will start the low speed running to the leveling point.
防扒门 Push-aside resistant door	非轿厢所在层层门开启后, 进入保护状态无法继续运行。需停电后复位。 If the door opens not at the located floor, it will enter into the protection condition, so it can not continue the running. It needs to be reset after the power failure.
延长关门延时 It prolongs the door shut time delay.	轿门开启至自动关门前, 按下此按钮, 则本次自动开门保持时间延长为所设置延长时间。 Form the car door open to the automatic shut, press this button, the automatic door-open time can be prolonged to the set time.
电动松闸 Electric brake release	无机机械松闸时用。 It can be used in none mechanical brake release.

注: “电动松闸”为KLWG无机房乘客电梯的可选功能
Electric brake release is optional for KLWG machine roomless passenger lift.



用户应完成的工作 The user's tasks

1. 本图按有关电梯技术标准要求绘制，需方复核后作为电梯安装依据。
It makes the drawing according to the relevant lift technical standard, it needs to be checked and confirmed by the user before it becomes the lift installation proof.
2. 机房内通向井道的所有孔洞四周应筑一高50mm以上，宽度适当的台阶。
It shall have one above 50mm step with the proper width around the holes that lead to the well in side the machine room.
3. 曳引机承重梁如需埋入墙内，则支承长度应超过墙中心20mm，且不应小于75mm。
It shall be embedded in the wall for the machine supporting beam of the traction machine. Then the supporting length shall be 20mm more than the wall center, It shall not be less than 75mm.
4. 安装完成后，地面装饰应与厅门地坎上表面有一高度适当的台阶，以防止水或其它杂物进入井道。
After the installation completion, the ground decoration shall have a proper height step in the sill surface to prevent water or other impurity from entering into the well.
5. 安装时浇灌的物体应能满足相关图式要求。
The casting object in the installation shall satisfy the relevant drawing requirements.
6. 缓冲器底座制作时应在安装人员的指导下施工。
The buffer base shall be made under the directions of the installers.

乘客电梯KLK1(一) Passenger Elevator KLK1(1)

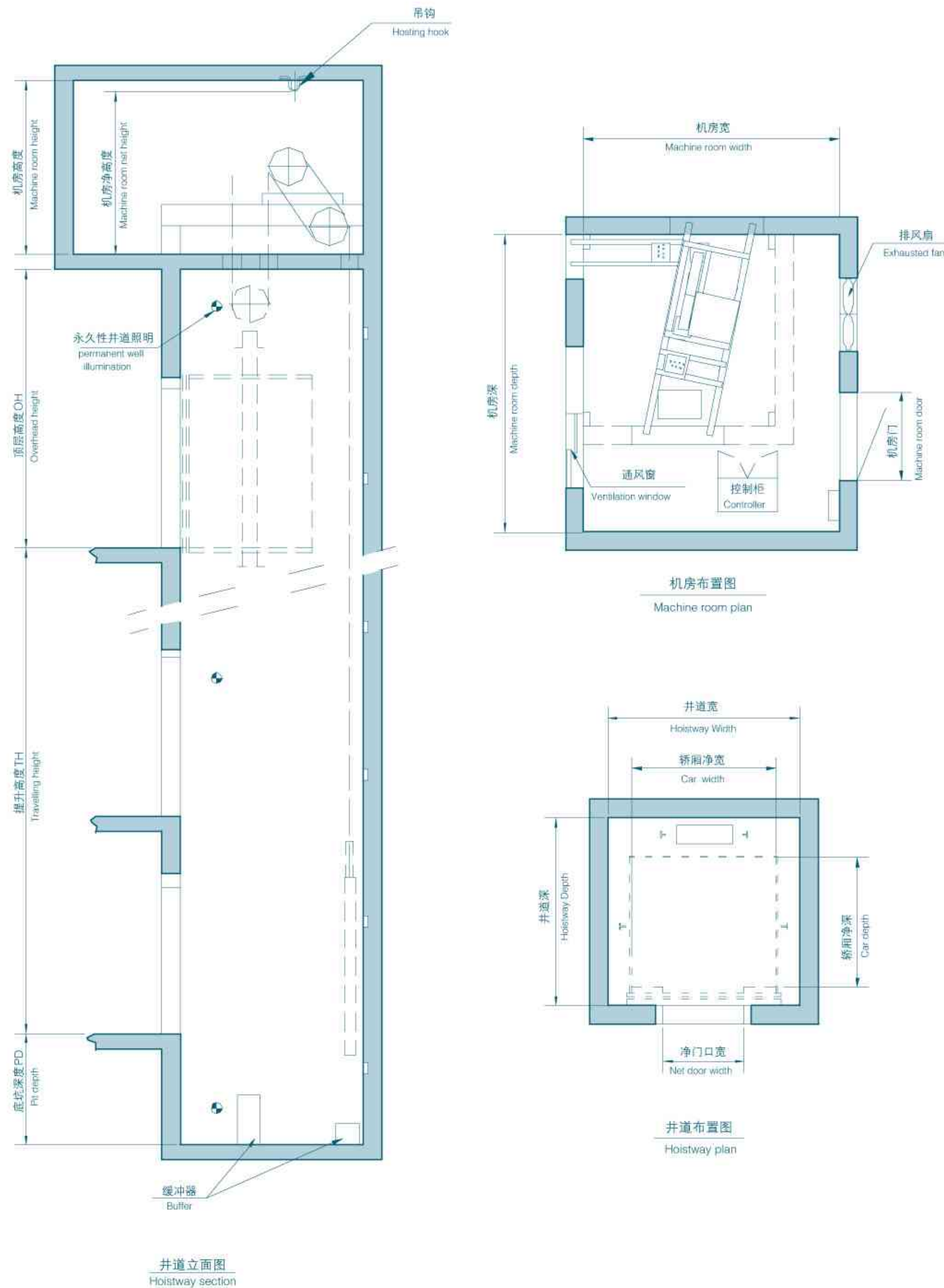
主参数据	载重量(Kg) Loading capacity	450				630				800				1000			
		1.0	1.5	1.0	1.5	1.6	1.75	1.0	1.5	1.6	1.75	1.0	1.5	1.6	1.75	2.0	
额定速度(m/s) Rated speed		1.0	1.5	1.0	1.5	1.6	1.75	1.0	1.5	1.6	1.75	1.0	1.5	1.6	1.75	2.0	
轿厢尺寸(mm) Car size	宽 Width	800	800	800	800	800	800	800	800	800	800	900	900	900	900	900	
	深 Depth	1100	1100	1100	1100	1100	1100	1350	1350	1350	1350	1500	1500	1500	1500	1500	
	高 Height	2300	2300	2450	2450	2450	2450	2450	2450	2450	2450	2450	2450	2450	2450	2450	
井道尺寸(mm) Hoistway size	宽 Width	1800	1800	2000	2000	2000	2000	2000	2000	2000	2000	2200	2200	2200	2200	2200	
	深 Depth	1750	1750	1850	1850	1850	1850	2050	2050	2050	2050	2200	2200	2200	2200	2300	
机房尺寸(mm) Machine room size	宽 Width	1800	1800	2500	2500	2500	2500	2500	2500	2500	2500	3000	3000	3000	3000	3000	
	深 Depth	3200	3200	3700	3700	3700	3700	3700	3700	3700	3700	3700	3700	3700	3700	3700	
	高 Height	2500	2500	2500	2500	2500	2500	2500	2500	2500	2500	2500	2500	2500	2500	2500	
顶层高度(mm) Top floor height		4400	4600	4400	4600	4600	4800	4400	4600	4600	4800	4400	4600	4600	4800	4800	
底坑深度(mm) Pit depth		1500	1700	1500	1700	1700	1700	1500	1700	1700	1700	1500	1700	1700	1700	2000	
最大提升高度(m) Max travelling height		50	60	50	60	60	80	50	60	60	80	50	60	60	80	120	

乘客电梯KLK1(二) Passenger Elevator KLK1(2)

主参数据	载重量(Kg) Loading capacity	1150				1250				
		1.0	1.5	1.6	1.75	1.0	1.5	1.6	1.75	2.0
额定速度(m/s) Rated speed		1.0	1.5	1.6	1.75	1.0	1.5	1.6	1.75	2.0
轿厢尺寸(mm) Car size	宽 Width	1800	1800	1800	1800	1950	1950	1950	1950	1950
	深 Depth	1400	1400	1400	1400	1400	1400	1400	1400	1400
	高 Height	2450	2450	2450	2450	2450	2450	2450	2450	2450
井道尺寸(mm) Hoistway size	宽 Width	2450	2450	2450	2450	2600	2600	2600	2600	2600
	深 Depth	2250	2250	2250	2250	2250	2250	2250	2250	2300
机房尺寸(mm) Machine room size	宽 Width	3000	3000	3000	3000	3200	3200	3200	3200	3200
	深 Depth	3700	3700	3700	3700	3700	3700	3700	3700	3700
	高 Height	2500	2500	2500	2500	2500	2500	2500	2500	2500
顶层高度(mm) Top floor height		4500	4700	4700	4800	4500	4700	4700	4800	4900
底坑深度(mm) Pit depth		1500	1700	1700	1700	1500	1700	1700	1700	2000
最大提升高度(m) Max travelling height		50	60	60	80	50	60	60	80	120

乘客电梯KLK1(三) Passenger Elevator KLK1(3)

主参数据	载重量(Kg) Loading capacity	1350				1600				2000		
		1.0	1.5	1.6	1.75	2.0	1.0	1.5	1.6	1.75	2.0	1.0
额定速度(m/s) Rated speed		1.0	1.5	1.6	1.75	2.0	1.0	1.5	1.6	1.75	2.0	1.0
轿厢尺寸(mm) Car size	宽 Width	1950	1950	1950	1950	1950	1950	1950	1950	1950	1950	1500
	深 Depth	1500	1500	1500	1500	1500	1750	1750	1750	1750	1750	2700
	高 Height	2450	2450	2450	2450	2450	2450	2450	2450	2450	2450	2450
井道尺寸(mm) Hoistway size	宽 Width	2600	2600	2600	2600	2600	2600	2600	2600	2600	2600	2700
	深 Depth	2350	2350	2350	2350	2350	2600	2600	2600	2600	2600	3200
机房尺寸(mm) Machine room size	宽 Width	3200	3200	3200	3200	3200	3200	3200	3200	3200	3200	3400
	深 Depth	3700	3700	3700	3700	3700	4000	4000	4000	4000	4000	4500
	高 Height	2500	2500	2500	2500	2500	2500	2500	2500	2500	2500	2500
顶层高度(mm) Top floor height		4500	4700	4700	4800	5000	4500	4800	4800	4800	4900	4800
底坑深度(mm) Pit depth		1500	1700	1700	1700	2000	1500	1700	1700	1700	2000	1600
最大提升高度(m) Max travelling height		60	80	80	100	120	50	80	80	100	120	50

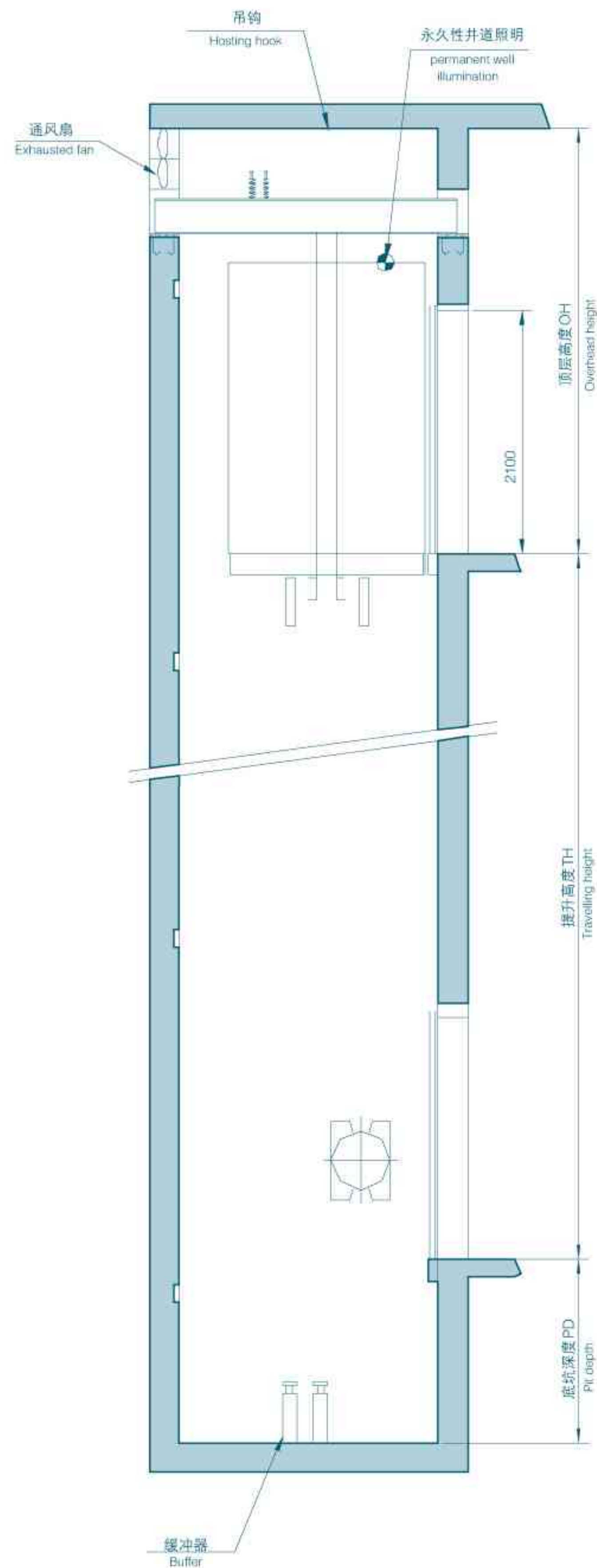


用户应完成的工作 The user's tasks

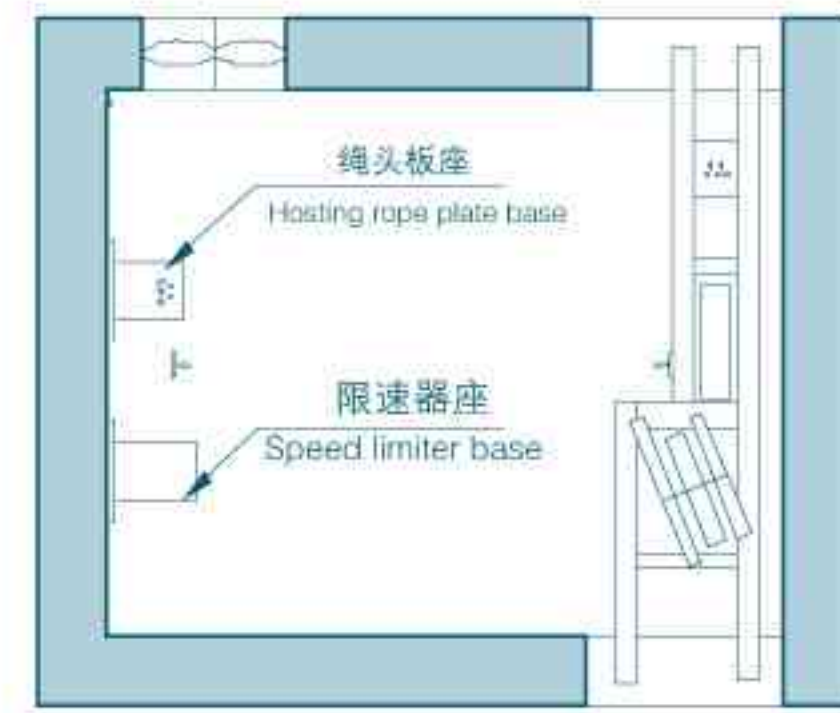
1. 本图按有关电梯技术标准要求绘制，需方复核后作为电梯安装依据。
It makes the drawing according to the relevant lift technical standard, it needs to be checked and confirmed by the user before it becomes the lift installation proof.
2. 机房内通向井道的所有孔洞四周应筑一高50mm以上，宽度适当的台阶。
It shall have one above 50mm step with the proper width around the holes that lead to the well in side the machine room.
3. 曳引机承重梁如需埋入墙内，则支承长度应超过墙中心20mm，且不应小于75mm。
It shall be embedded in the wall for the machine supporting beam of the traction machine. Then the supporting length shall be 20mm more than the wall center. It shall not be less than 75mm.
4. 安装完成后，地面装饰应与厅门地坎上表面有一高度适当的台阶，以防止水或其它杂物进入井道。
After the installation completion, the ground decoration shall have a proper height step in the sill surface to prevent water or other impurity from entering into the well.
5. 安装时浇灌的物体应能满足相关图示要求。
The casting object in the installation shall satisfy the relevant drawing requirements.
6. 缓冲器底座制作时应在安装人员的指导下施工。
The buffer base shall be made under the directions of the installers.

◎高速乘客电梯KLK2 High Speed Passenger Elevator KLK2

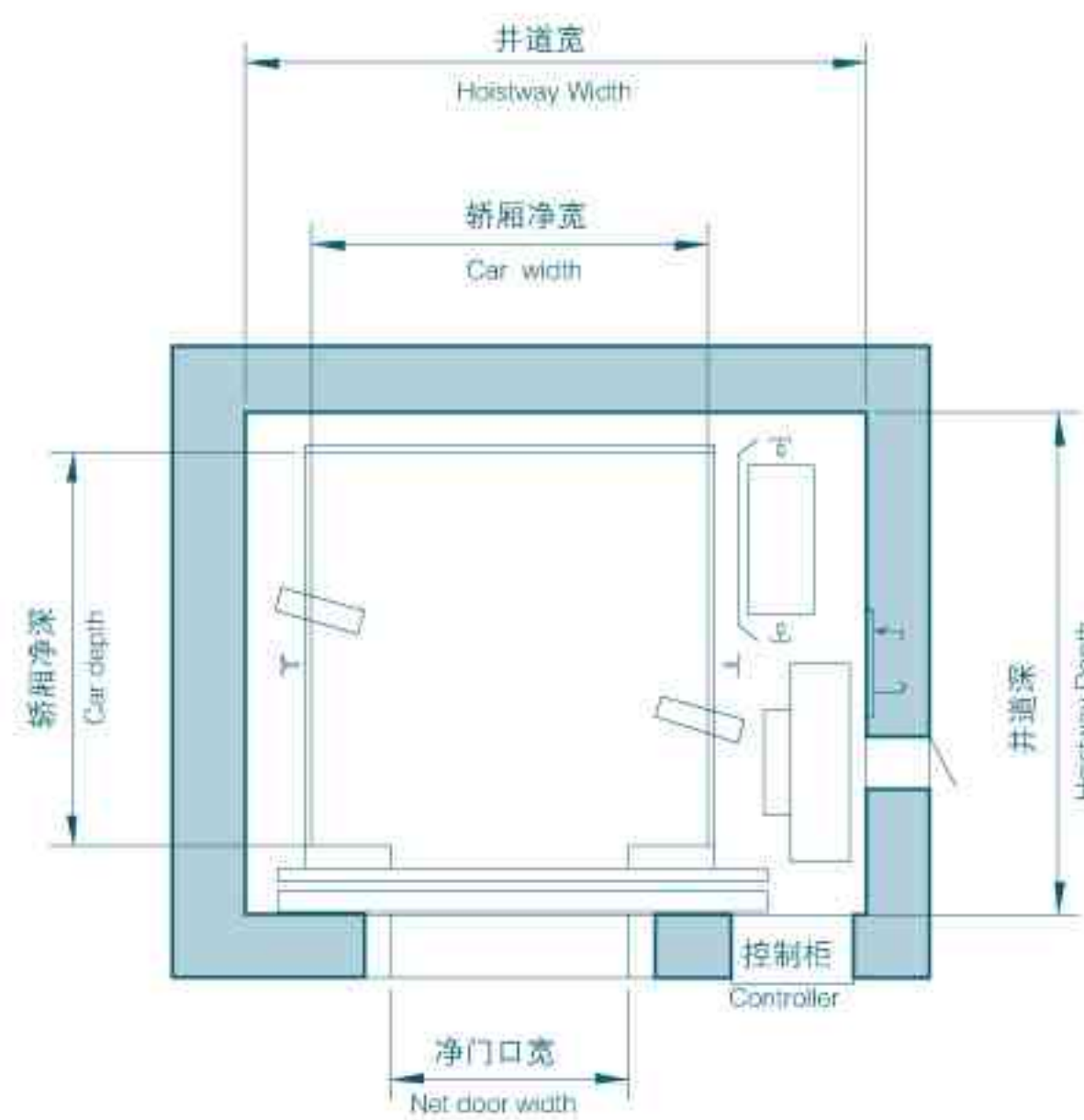
主参数	载重量(Kg)		1000		1150		1250		1350		1600	
	Loading capacity	Rated speed	2.5	3.0	2.5	3.0	2.5	3.0	2.5	3.0	2.5	3.0
开门尺寸(mm)	Door opening size		900	900	1100	1100	1100	1100	1100	1100	1100	1100
轿厢尺寸(mm)	Car size		宽	1600	1600	1800	1800	1950	1950	1950	1950	1950
	Depth		1500	1500	1400	1400	1400	1400	1500	1500	1750	1750
	Height		2600	2600	2600	2600	2600	2600	2600	2600	2600	2600
井道尺寸(mm)	Hoistway size		宽	2200	2200	2450	2450	2600	2600	2600	2600	2600
	Depth		2300	2300	2300	2300	2300	2300	2350	2350	2600	2600
	Machine room size		宽	3000	3000	3200	3200	3200	3200	3200	3200	3200
Depth		3700	3700	3700	3700	3700	3700	3700	3700	4000	4000	
Height		2500	2500	2500	2500	2500	2500	2500	2500	2500	2500	
顶层高度(mm)		Top floor height	5200	5200	5200	5200	5200	5200	5200	5200	5200	
底坑深度(mm)		Pit depth	2200	3200	2200	3200	2200	3200	2200	3200	2200	
最大提升高度(mm)		Max travelling height	120	120	120	120	120	120	120	120	120	



井道立面图
Hoistway section



A-A剖面
Section A-A



井道布置图
Hoistway plan

用户应完成的工作 User's tasks

1. 本图按有关电梯技术标准要求绘制，需方复核后作为电梯安装依据。
It makes the drawing according to the relevant lift technical standard. It needs to be checked and confirmed by the user before it becomes the lift installation proof.
2. 曳引机安装在井道墙壁上，倒置。
The traction machine has been reversely installed in the well wall.
3. 顶部通风待电梯安装后，由用户自理。
The top ventilation will be offer the lift installation and at the user's own expense.
4. 安装完成后，地面装饰应与厅门地坎上表面有一高度适当的台阶，以防止水或其它杂物进入井道。
After the installation completion, the ground decoration shall have a proper height step in the sill surface to prevent water or other impurity from entering into the well.
5. 安装时浇灌的物体应能满足相关图示要求。
The casting object in the installation shall satisfy the relevant drawing requirements.
6. 缓冲器底座制作时应在安装人员的指导下施工。
The buffer base shall be made under the directions of the installers.

附注：括号内尺寸(402.5)为1.5-1.75m/s使用。
Remarks: The size in the brackets (402.5) is for 1.5-1.75m/s use.

◎无机房电梯KLW Machine Roomless Elevator KLW

主 参 数 Main Specifications	载重量(Kg) Loading capacity	630				800				1000				2000
	额定速度(m/s) Rated speed	1.0	1.5	1.6	1.75	1.0	1.5	1.6	1.75	1.0	1.5	1.6	1.75	1.0
开门尺寸(mm) Door opening size		800	800	800	800	800	800	800	800	900	900	900	900	1600
轿厢尺寸(mm) Car size	宽 Width	1100	1100	1100	1100	1300	1300	1300	1300	1500	1500	1500	1500	1800
	深 Depth	1400	1400	1400	1400	1400	1400	1400	1400	1500	1500	1500	1500	2300
	高 Height	2360	2360	2360	2360	2360	2360	2360	2360	2360	2360	2360	2360	2400
井道尺寸(mm) Hoistway size	宽 Width	1900	1900	1900	1900	2150	2150	2150	2150	2350	2350	2350	2350	2850
	深 Depth	1850	1850	1850	1850	1850	1850	1850	1850	1900	1900	1900	1900	2850
顶层高度(mm) Top floor height		4000	4200	4200	4200	4000	4200	4200	4200	4000	4200	4200	4200	4600
底坑深度(mm) Pit depth		1600	1700	1700	1700	1600	1700	1700	1700	1600	1700	1700	1700	1700
最大提升高度(m) Max. travelling height		50	60	60	60	50	60	60	60	50	60	60	60	30

康力服务



● 全球服务网络
Worldwide service system



康力优秀的售后服务为客户创造价值最大化 CANNY's excellent after-sale service creates maximum value for vast customers.

要使电梯这些精密的机电一体化工程系统获得长久的使用寿命和一贯的、经济的、高品质的性能，除了在制造领域方面精益求精外，还有通过熟练精确的安装和定期维护。

康力电梯的安装及维护服务，将确保您的电梯以其最良好的工作状态，最大程度地提供运行服务，让您获得最大化的满意。

Apart from continuously improving the manufacture field, only the accurate and proficient installation and the regular maintenance can grant the long service life, the quality; persistent and economical performance to these precise and electro-mechanically integrated project system of the lifts.

The installation, repair and maintenance service of CANNY lift will warrant the most superior work conditions of your lift. It offers the travel service and gains maximum satisfaction from you to the greatest degree.

- 康力拥有专业的维保力量，能将故障总是消灭在它发生之前。
CANNY owns the professional repair and maintenance strength. It can always eliminate the trouble before it actually happens.



● 服务中心
Service center

- 康力在国内各主要城市均设有分支机构，将为当地的客户提供快捷的服务，包括备件的供应以及响应时间。
CANNY establishes the brand institutes in various major cities in China. It will furnish the local clients with the prompt service, including the spare supply and the responsive time.



● 24小时急修服务
24-hour call-out service

- 康力为紧急排除故障而特设的24小时客户热线，将在第一时间为您提供服务。
CANNY sets 24-hour customer hotline in order to urgently remove the trouble. It will most promptly furnish you with the best service.

- 康力定期派员对您的设备的运行状态进行检测，将使您的设备得到最为专业的保养。

CANNY regularly assign the staff to test your equipment's travel conditions so that your device can get the most professional maintenance.



● 监控网络
Monitoring Internet

CANNY's service along with product

与产品同在

创新是一种文化 Innovation is a kind of culture



自主创新精神就是一种文化，实现自主创新首先必须实现文化创新，康力电梯致力于培养企业全体员工的创新意识、创新精神和创新能力，实现了管理与技术的双重跨越，达到了国际先进水平。

Independent innovation is a kind of culture. Cultural innovation goes before the independent innovation. CANNY Elevator devotes itself to fostering the innovative consciousness, spirits and capability of personnel. It fulfills the dual-transcendence of both the management and the technology. It achieves the advanced international standard.